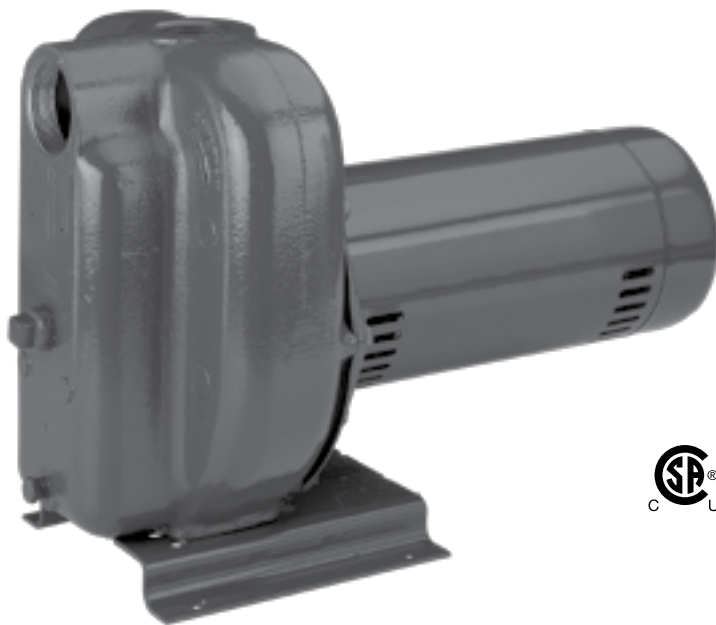


STA-RITE® DS2 Series

Self-Priming Centrifugal Pumps



Fast-priming DS2 Series pumps in 1 through 2-1/2 HP models, with a low-friction Lexan® or Noryl® impeller. These high head pumps feature leakproof mechanical seals, easy service design, heavy-duty motors and rugged construction. Self-priming after initial filling with water.

APPLICATIONS

Lawn sprinkling: Pumps can be safely operated by timer or other automatic device

Contractors: For dewatering excavation, jetting, water transfer and supply

Agriculture: Seed bed and plot irrigation, stock watering, fire protection

Industrial: Sump drainage, fire protection, marine pumping, liquid transfer and supply operations

SPECIFICATIONS

Body and Base: Close-grained cast iron

Impeller: Lexan® or Noryl®

Diffuser: Polypropylene

Shaft: Stainless Steel

FEATURES

Rugged Construction: Heavy-duty motors, easy service design

Drain Port: Provided for easy winterizing

High Head Models: Delivers up to 145' of head with capacities to 95 GPM

Easy Serviceability: Normal wearing parts are easily accessible for service and replacement, without disturbing piping or mounting

Heavy-Duty Motors: Designed for continuous operation. Capacitor start, will not cause electrical interference with TV or other appliances. Nationally known motors have ball bearing, stainless steel shaft. For single and three-phase operation, 3450 RPM.

ORDERING INFORMATION

HIGH HEAD

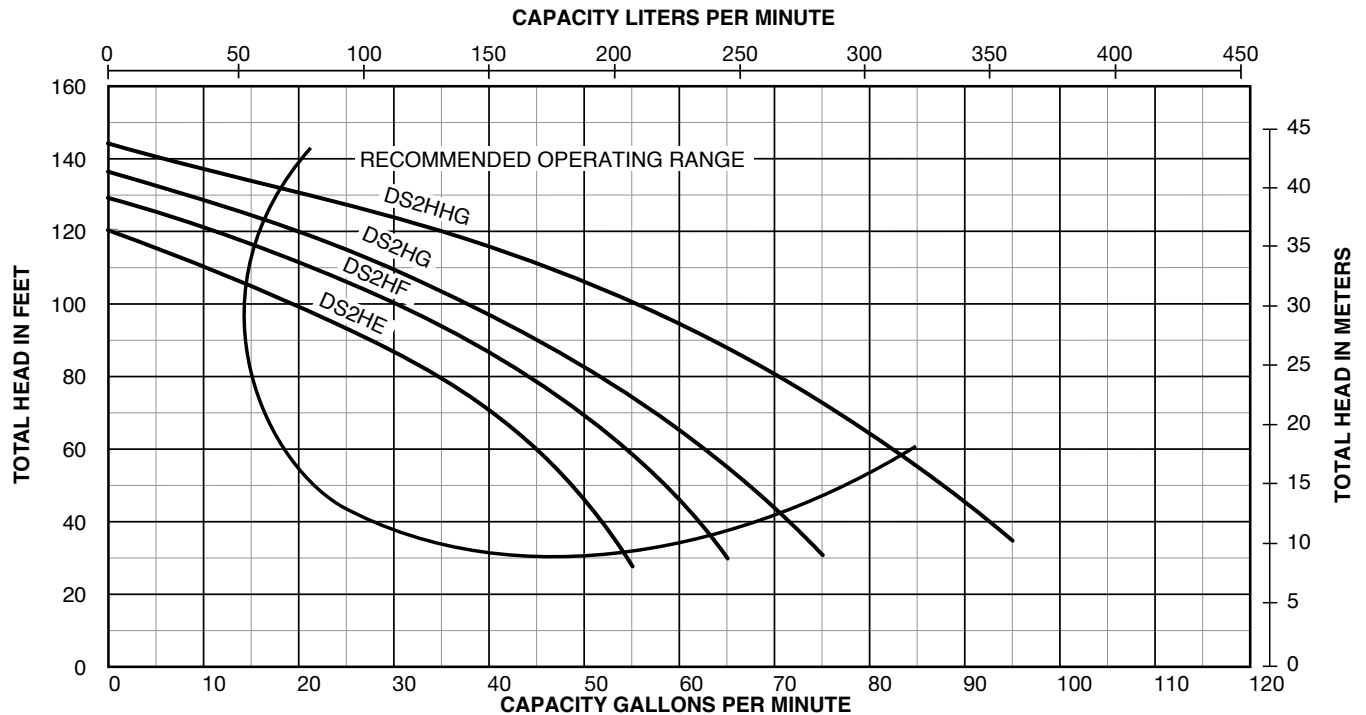
Catalog Number	HP	Pump/Motor Unit		Motor Voltage	Phase	Approx. Wt. Lbs.
		Suction	Discharge			
DS2HE	1	2"	1-1/2"	115/230	1	73
DS2HE3	1	2"	1-1/2"	208/230/460	3	73
DS2HF	1-1/2	2"	1-1/2"	115/230	1	79
DS2HF3	1-1/2	2"	1-1/2"	208/230/460	3	79
DS2HG	2	2"	2"	230	1	91
DS2HG3	2	2"	2"	208/230/460	3	91
DS2HHG	2-1/2	2"	2"	230	1	93
DS2HHG3	2-1/2	2"	2"	208/230/460	3	93

Pentair trademarks and logos are owned by Pentair plc or its affiliates. All other third party registered and unregistered trademarks and logos are the property of their respective owners.

STA-RITE® DS2 Series

Self-Priming Centrifugal Pumps

PUMP PERFORMANCE



PUMP PERFORMANCE (CAPACITY IN GALLONS PER MINUTE)

Catalog Number	HP	Discharge Pressure		Suction Lift in Feet				
		PSI	Feet Head	Gallons Per Minute				
				5'	10'	15'	20'	25'
DS2HE	1	20	46.2	46	43	41	38	35
		30	69.3	35	32	29	25	21
		40	92.4	19	15	10	-	-
DS2HF	1-1/2	20	46.2	55	53	51	49	46
		30	69.3	45	42	39	36	32
		40	92.4	31	27	22	18	12
DS2HG	2	20	46.2	64	62	59	57	51
		30	69.3	53	50	47	44	38
		40	92.4	38	35	31	26	20
		50	115.5	19	13	-	-	-
DS2HHG	2-1/2	20	46.2	76	70	65	59	46
		30	69.3	63	57	51	42	23
		40	92.4	48	38	23	-	-
		50	115.5	23	10	-	-	-

Tested and rated in accordance with Water Systems Council Standards.

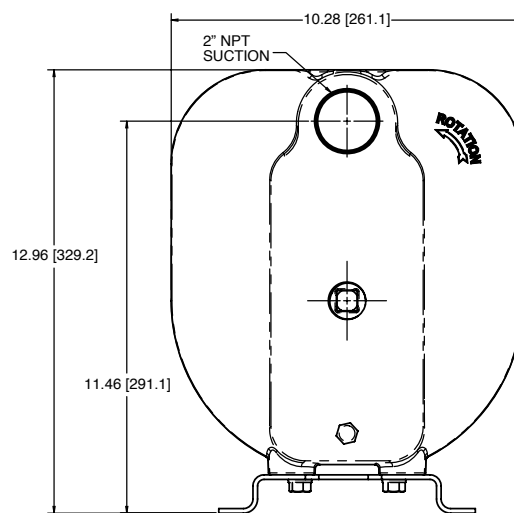
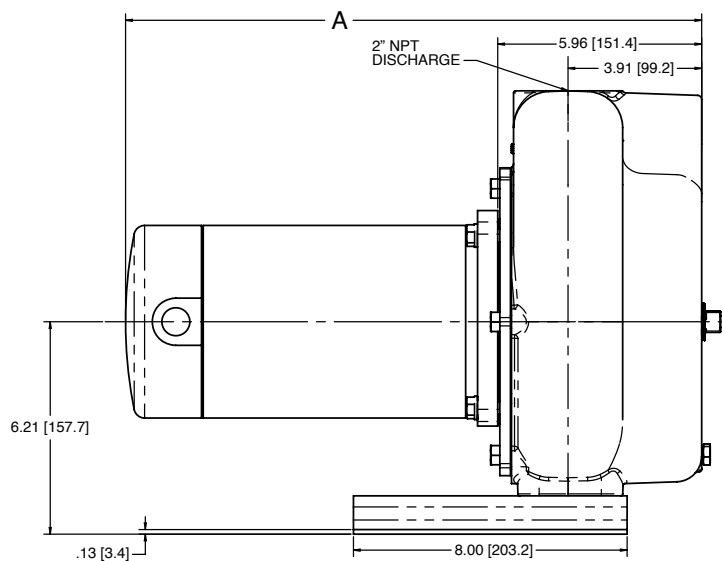
NOTE: Pumps installed with a Pro-Source® tank require a 100 PSI relief valve. Pumps installed with a conventional tank require a 75 PSI relief valve. Relieve valve must be capable of relieving entire flow of pump at relief pressure.

Specifications are subject to change without notice.

STA-RITE® DS2 Series

Self-Priming Centrifugal Pumps

OUTLINE DIMENSIONS



Cat. No	HP	A*
DS2HHG	2-1/2	18.59
DS2HG	2	18.59
DS2HF	1-1/2	17.84
DS2HE	1	16.96

*Overall length [A] shown for single-phase motors. Three-phase motors are slightly smaller.
Dimensions (in inches) are for estimating purposes only.

