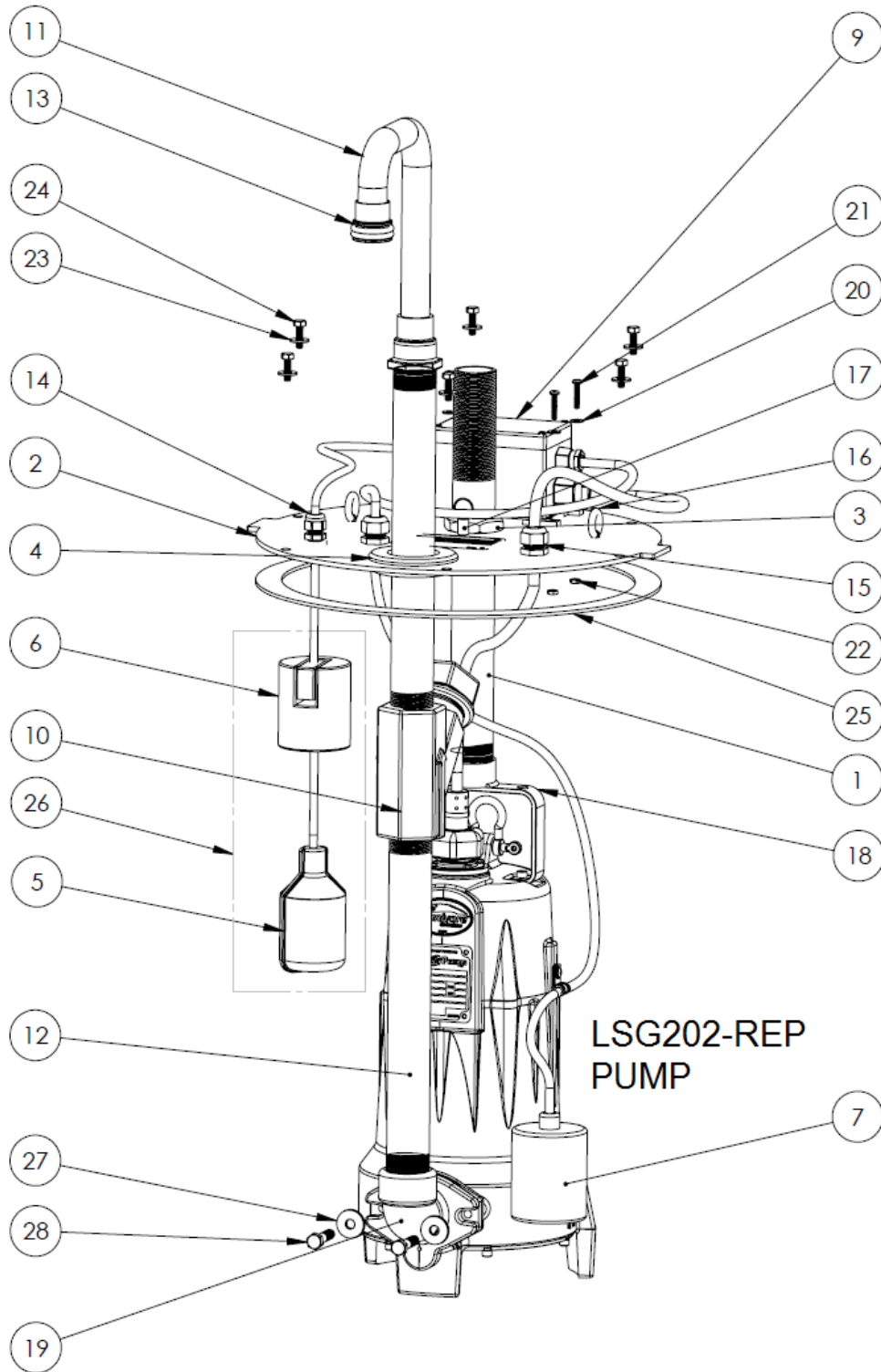


LSG202-RE (B48)



**LSG202-RE**

**LSG202-RE (B48)**

<b>#</b>	<b>PART #</b>	<b>DESCRIPTION</b>	<b>QTY</b>	<b>Note</b>
1	5669000	1-1/4" PIPE HANGER, STRAIGHT THREADS	1	
2	5661000	COVER	1	
3	5670000	1-1/4" GALVANIZED PIPE NUT	2	
4	4760000	1-1/4" PIPE SEAL GROMMET	1	[1]
5	K001134	FLOAT SWITCH, 20FT CORD, INCLUDES 1 SWITCH PER KIT	1	
6	K001388	CABLE WEIGHT	1	
7	K001136	SWITCH KIT	1	
9	5663000	JUNCTION BOX	1	
10	ACV125	1.25" ANTI-SIPHON VALVE	1	
11	5656000	CUSTOM COPPER ELBOW	1	
12	5671000	DISCHARGE PIPE, 1-1/4", GALVANIZED	2	
13	5666000	O-RING	2	[1]
14	4785000	CORD GRIP SIZE 09	1	
15	RCC8	SM WATERTIGHT CABLE GRIP	2	
16	5673000	EYEBOLT	2	
17	5662000	QUICK RELEASE PIN	1	
18	56740A0	PUMP HANDLE / HANGER	1	
19	G90	FLANGED ELBOW KIT, INCLUDES GASKET, SCREWS AND WASHER	1	
20	8141000	WASHER, #10 X 1/2 SS	5	
21	8059000	SCREW 10 - 24 x 1 PHILLIPS HEAD	4	
22	8002000	#10-24 STAINLESS STEEL HEX	4	
23	8131000	1/4x3/4" STAINLESS STEEL FLAT WASHER	6	
24	8024000	1/4-20x7/8" HEX HEAD SS BOLT	6	
25	4039RB0	GASKET TAPE 1/4" THICK, 56"	1	
26	K001135	ALARM SWITCH WITH CABLE WEIGHT	1	
27	8158000	WASHER, 3/8 x 1-1/8, SS	1	
28	8143000	SCREW, 3/8-16 x 1-3/4 LG, SS	1	

**PART NOTES:**

[1] - Part requires factory authorized service. Contact Liberty Pumps at 1-800-543-2550