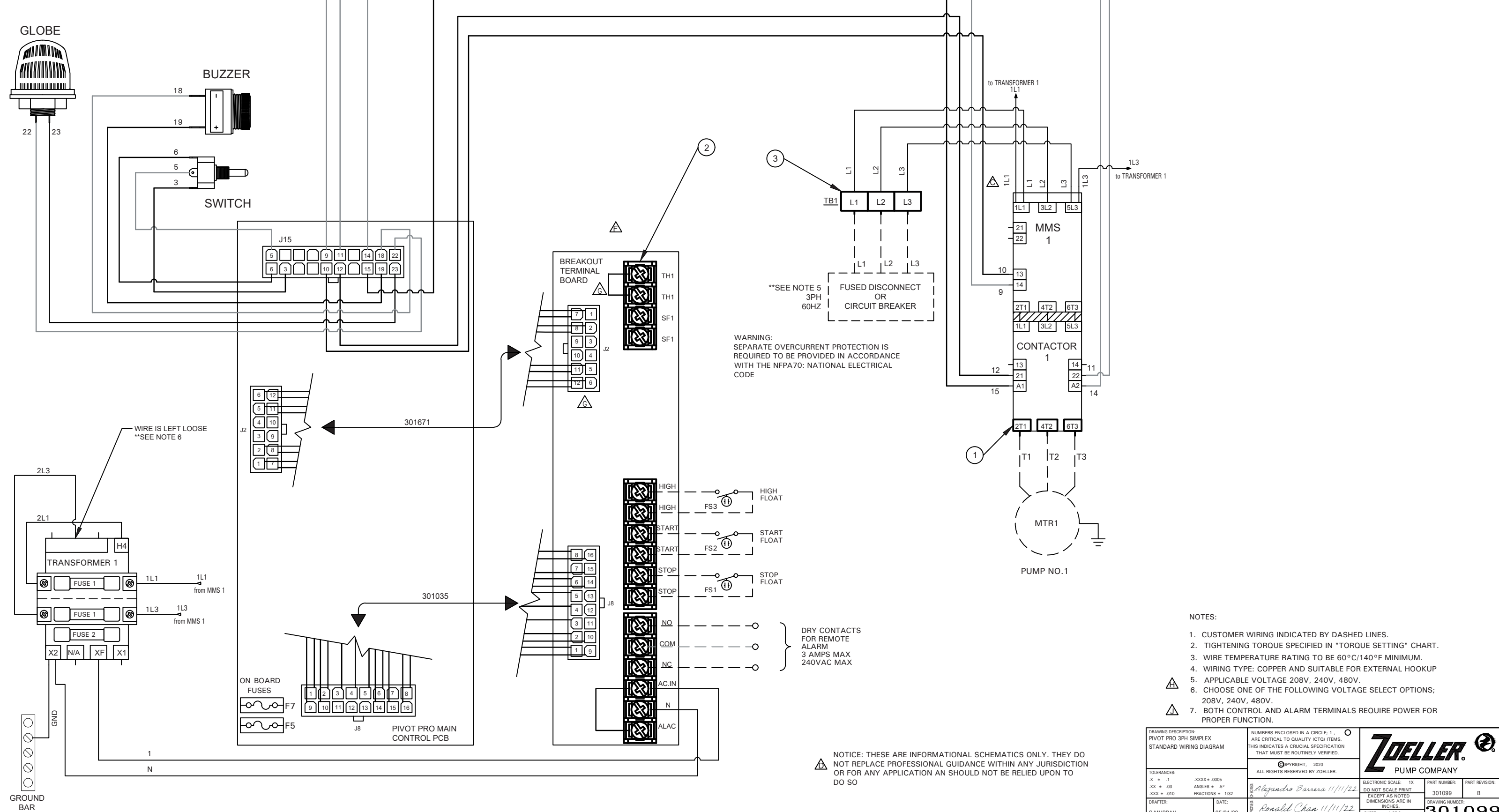


DRAWING REVISIONS				
LTR	BY	DATE	ECO #	DESCRIPTION
A	ISM	05/01/20	11069	RELEASE
B	AF	08/20/20	11098	JUMPERS ADDED
C	AF	9/15/20	11110	WIRE LABELS CHANGED
D	AF	01/13/21	11188	LEGAL NOTICE ADDED
E	AF	03/24/21	11212	TORQUE TABLE REMOVED
F	AF	05/25/21	11320	HEAT AND SEAL ADDED
G	AF	08/30/21	11366	HEAT AND SEAL WIRING UPDATED
H	AF	12/07/21	11391	APPLICABLE VOLTAGE UPDATED
J	PY	11/11/22	11437	TORQUE SETTING & NOTE ADDED

CUSTOMER TORQUE SETTING		
NUMBER	COMPONENT	TORQUE
1	CONTACTORS	1.7 N.m. 15 lb-in
2	BREAKOUT TERMINAL BOARD	1.15 N.m. 10 lb-in
3	TERMINAL BLOCK 6mm ² -CROSS SECTION	1.5-1.8 N.m. 13.3-15.9 lb-in
	TERMINAL BLOCK 16mm ² -CROSS SECTION	2.5-3 N.m. 22.1-26.5 lb-in



- NOTES:
- CUSTOMER WIRING INDICATED BY DASHED LINES.
 - TIGHTENING TORQUE SPECIFIED IN "TORQUE SETTING" CHART.
 - WIRE TEMPERATURE RATING TO BE 60°C/140°F MINIMUM.
 - WIRING TYPE: COPPER AND SUITABLE FOR EXTERNAL HOOKUP
 - APPLICABLE VOLTAGE 208V, 240V, 480V.
 - CHOOSE ONE OF THE FOLLOWING VOLTAGE SELECT OPTIONS; 208V, 240V, 480V.
 - BOTH CONTROL AND ALARM TERMINALS REQUIRE POWER FOR PROPER FUNCTION.

WARNING: SEPARATE OVERCURRENT PROTECTION IS REQUIRED TO BE PROVIDED IN ACCORDANCE WITH THE NFPA70: NATIONAL ELECTRICAL CODE

DRAWING DESCRIPTION: PIVOT PRO 3PH SIMPLEX STANDARD WIRING DIAGRAM		NUMBERS ENCLOSED IN A CIRCLE, 1, 2, 3, 4, 5, 6, 7, 8, 9, 10, 11, 12, 13, 14, 15, 16, 17, 18, 19, 20, 21, 22, 23, 24, 25, 26, 27, 28, 29, 30, 31, 32, 33, 34, 35, 36, 37, 38, 39, 40, 41, 42, 43, 44, 45, 46, 47, 48, 49, 50, 51, 52, 53, 54, 55, 56, 57, 58, 59, 60, 61, 62, 63, 64, 65, 66, 67, 68, 69, 70, 71, 72, 73, 74, 75, 76, 77, 78, 79, 80, 81, 82, 83, 84, 85, 86, 87, 88, 89, 90, 91, 92, 93, 94, 95, 96, 97, 98, 99, 100 ARE CRITICAL TO QUALITY (CTQ) ITEMS. THIS INDICATES A CRUCIAL SPECIFICATION THAT MUST BE ROUTINELY VERIFIED.	
TOLERANCES: X ± .1 XX ± .03 XXX ± .010		ELECTRONIC SCALE: 1X DO NOT SCALE PRINT EXCEPT AS NOTED DIMENSIONS ARE IN INCHES.	
DRAFTER: S.MURRAY		DATE: 05/01/20	
APPROVED: Ronald Chen 11/11/22		PART NUMBER: 301099	
SHEET: 1 OF 2		PART REVISION: B	



301099