

GRUNDFOS PLUMBING SOLUTIONS



be
think
innovate

GRUNDFOS 

SUBMERSIBLE PUMPS

Common Uses: Sump water ejection, wastewater ejection with high content of fibers and stormwater ejection.

SUMP WATER EJECTION IN ELEVATOR PITS

-UNILIFT KP/AP

Unilift KP, AP pumps are submersible drainage pumps suitable for both temporary and permanent free-standing installation. They can be used for pumping drain water or grey wastewater. They are also suitable for installation in collecting tanks.



TECHNICAL DATA

- Max flow rate: 62/140 GPM
- Max total dynamic head: 32/52 feet
- Max particle size: .4/2 inch
- Material: Stainless steel

FEATURE AND BENEFITS

- Simple installation
- Service and maintenance-free
- Reliable

COMMERCIAL WASTEWATER EJECTION WITH SMALLER DISCHARGE PIPES AND HIGHER HEADS

-SEG GRINDER

Pressurized systems are the perfect choice for transfer of effluent and commercial sewage, and the SEG range combines cost-effectiveness with maximum protection for the environment by facilitating the use of smaller pressure pipes for minimal investment costs.



TECHNICAL DATA

- Max flow rate: 158 GPM
- Max head: 158 feet
- Material: Cast iron and stainless steel

FEATURE AND BENEFITS

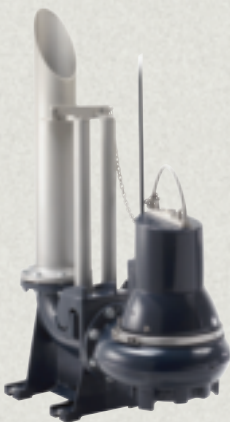
- Efficient grinder system
- Watertight cable plug
- Quick removal system

COMMERCIAL WASTEWATER, SUMP WATER OR STORM WATER EJECTION

-SL1/SLV

- SL1 pumps with single-channel S-tube impeller
- SLV pumps with SuperVortex (free-flow) impeller

The pumps are free-flow (SuperVortex) and single-channel S-tube impeller pumps specifically designed for pumping wastewater in a wide range of applications. The pumps are made of resistant materials, such as cast iron and stainless steel. These materials ensure long and reliable operation.



TECHNICAL DATA

- Impeller design: Single channel and super vortex
- Max flow rate: 1300 GPM
- Max head: 147 feet
- Max solid size: 4 inch
- Material: Cast iron and stainless steel

FEATURE AND BENEFITS

- Quick removal system
- Watertight cable plug
- Easy to open clamp



PACKAGED LIFT STATION

Common Uses: Wastewater ejection with high fiber content, effluent and groundwater.

Quick removal systems are pre-installed making it easy to install up to two pumps. In addition, all necessary components such as piping and valves are built-in and supplied in corrosion resistant materials.

TECHNICAL DATA

- Diameter size: Up to 48 inch for SEG pumps
- Diameter size: Up to 67 inch for SL1/SLV pumps
- Depth size: 78-236 inch

FEATURE AND BENEFITS

- Tank is designed to withstand uplift caused by high water table
- Easier installation as concrete foundation is not necessary



FLOAT SWITCH

Non mercury type float switches for standard and explosion proof pumps.

SIMPLEX AND DUPLEX LEVEL CONTROL PANELS

UL listed simplex and duplex control panels for 2 hp to 15 hp pumps. Single phase 2 hp, 208 and 230V, Three phase 2 hp to 15 hp, 460V and 575V.

It is standard but we have a number of other options as written in our Data Booklet.

SLC /DLC FOR ONE AND TWO PUMPS PROVIDES:

- High water level alarm
- Pump on/off control
- Pump protection



PRESSURE BOOSTING



PRESSURE BOOSTING SYSTEMS (MULTIPLE PUMPS)

Common Uses: Domestic water pressure boosting in commercial buildings, multi-story buildings, process applications and many other variable flow rate applications.

ADVANCED PUMP SYSTEM -BOOSTERPAQ® HYDRO MPC

Hydro MPC BoosterpaQ systems are superior pump systems with advanced control capability. The Hydro MPC BoosterpaQ system offers the greatest flexibility, together with control capability and available system variation, for applications requiring the best in terms of quality, reliability and controllability.

TECHNICAL DATA

- Max flow rate: 4200 GPM
- Max head: 635 feet
- Liquid temp: +32°F to +176°F
- Max working press: 232 psi

- Constant pressure
- Low-energy consumption
- Intuitive control interface
- ASHRAE 90.1-2010 compliant without remote mounting sensor
- NSF 61/UL372 Drinking Water Approval
- SCADA communications capable (Modbus, Profibus, LON, BACnet)

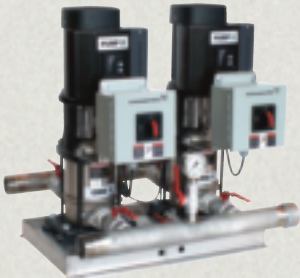
FEATURE AND BENEFITS

- Optimized controller with advanced functionality



NO PANEL SYSTEM -HYDRO MULTI-E

Hydro Multi-E systems are high quality pump systems with simple control accomplished through the drives on the pumps. The Hydro Multi-E system is an all-VFD control pump system that does not have a control panel. This makes the Hydro Multi-E system a space-saving pump system that delivers efficient pumping through multi-pump VFD control with all the benefits of the high quality and reliability of the Grundfos CRE pumps.



TECHNICAL DATA

- Max flow rate: 1000 GPM
- Max head: 535 feet
- Liquid temp: +32°F to +176°F
- Max working press: 232 psi

- Simple installation
- Low-energy consumption
- ASHRAE 90.1-2010 compliant
- NSF 61/UL372 Drinking Water Approval
- SCADA communications capable (Modbus, Profibus, LON, BACnet)

FEATURE AND BENEFITS

- Constant pressure, all-variable speed control



ECONOMICAL PUMP SYSTEM -HYDRO MULTI-B

Hydro Multi-B system is an economical pump system option with simple controller designed for pressure boosting applications. The Hydro Multi-B systems are an all-VFD control pump system that uses the Grundfos CME pumps. The CME pumps are inherently compact end-suction design multi-stage pumps. This makes the Hydro Multi-E system a space-saving pump system that delivers efficient pumping through multi-pump VFD control.



TECHNICAL DATA

- Max flow rate: 330 GPM
- Max head: 231 feet
- Liquid temp: +32°F to +145°F
- Max working press: 232 psi

- Optimized simple to use controller
- NSF 61/UL372 Drinking Water Approval
- ASHRAE 90.1-2010 compliant
- SCADA Communication capable (Modbus, Profibus, LON, BACnet)

FEATURE AND BENEFITS

- Compact all-VFD controlled booster pump system



PRESSURE BOOSTING SYSTEMS (SIMPLEX)

Common Uses: Domestic water pressure boosting in commercial buildings, multi-story buildings and process applications.

SIMPLEX PUMP SYSTEMS -CRE-PLUS

CRE-Plus systems are superior simplex pump systems. The CRE-Plus is a compact VFD-controlled pump system. This makes the CRE-Plus system a space-saving pump system that delivers efficient pumping through VFD control with all the benefits of the high quality and reliability of the Grundfos CRE pumps.

TECHNICAL DATA

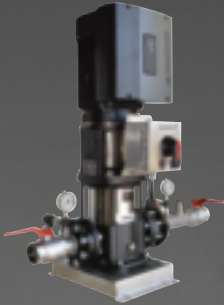
- Max flow rate: 790 GPM
- Max head: 535 feet
- Liquid temp: -22°F to +248°F
- Max working press: 435 psi

- Low energy consumption
- Reduced maintenance
- SCADA Communication capable (Modbus, Profibus, LON, BACnet)



FEATURE AND BENEFITS

- Constant pressure, variable speed control
- Simple installation

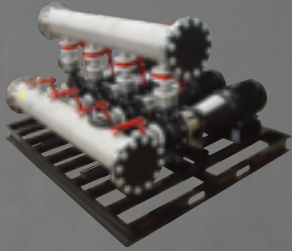


GRUNDFOS ENGINEERED SYSTEMS

GES is an agile team created to provide integrated pumping system solutions from Grundfos. We focus on solutions that aim for integration of our unique core technologies. These solutions include optimized pumping systems, intelligent controls and the selection of the most efficient pump types and technologies available for each application. With a history dating back to 1859, our diverse brands include Grundfos, Peerless, PACO, Yeomans and Alldos.

GES CORE COMPETENCIES

- Systems Integration
- Hydraulic Design
- Controls and Communications
- Fire, Pressure Boosting, HVAC, Large Flow Water Transfer Systems
- Project management and execution



HOT WATER RECIRCULATION



HOT WATER RECIRCULATION PLUMBING APPLICATION

Common Uses: Commercial and solar applications with lead-free bronze or stainless steel pump options for potable open-systems.

WET ROTOR CIRCULATOR WITH ELECTRONICALLY COMMUTATED MOTORS (ECMs) AND CONTROLS -MAGNA3

TECHNICAL DATA

- Max flow rate: 550 GPM
- Max head: 60 feet TDH
- Liquid temp: +14°F to +230°F (Open-system 140°F)
- Max working press: 145 psi
- Integrally mounted pressure and temperature sensor built in
- Energy efficient and intelligent circulator
- Multiple control modes on pump interface
- Quiet operation

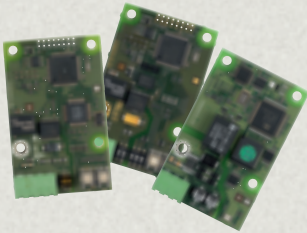
FEATURE AND BENEFITS

- For all commercial plumbing or HVAC applications

MAGNA 3 - Water temperature intelligent control maintains temperature at a fixed point

The MAGNA3 ECM energy savings circulator features the best control monitoring and optimal pump regulation for domestic hot water applications that require a CONSTANT TEMPERATURE. There is no need to use of an external aqua-stat (thermostat) to control water temperature. No need for a timer either. An external controller for temperature regulation is made unnecessary.

BUS communication products enable system integration of Grundfos products into common Building Automation Systems implementing BACnet, Modbus, LonWorks, and Profibus.



WET ROTOR CIRCULATORS -UP/UPS/ALPHA

For low flow and smaller commercial applications. UP/UPS circulators offer multi-fixed speed for single fixed speed models. For applications below 20 GPM, the Grundfos ALPHA offers EMC motor technology with seven different control modes; 3-fixed speeds, 3 constant pressure and AUTOAdapt.

TECHNICAL DATA

- Max flow rate: 275 GPM
- Max head: 60 feet
- Liquid temp: Open-systems 140°F
- Max working press: 145 psi
- Maintenance-free
- No bearings or mechanical seal

FEATURE AND BENEFITS

- Quiet operation
- Wet rotor technology uses the pump medium to cool the motor

OPTIONAL

Timers and thermostat controls are available to limit pump operation during periods when hot water is consumed.





PUMP MONITORING AND CONTROLLER -GO REMOTE

Grundfos GO Remote gives you complete control over every aspect of pump and multi-pump performance. GO can monitor all relevant pump data, group pumps for increased manageability, change settings and much more. GO Remote works with all Grundfos E-pumps and communicates using both radio and infrared technology. It provides live pump data feeds (duty point, power consumption, speed, liquid temperature). The alarm log system has been designed to make error codes fully descriptive and intuitive.

MORE CONNECTED GO

With GO Remote, you will never be out of touch. You get around-the-clock help such as quick-links to all relevant documentation and full integration with our easy online sizing and replacement tools. You will always be at the forefront of mobile pump technology.

MORE TIMESAVING GO

GO Remote has been designed to save you time and effort. The built-in PDF generator stores your pump reports (documenting your pump configurations) and important notes safely in an easy-to-share format. This saves you the trouble of dealing with pen, paper and printouts. In larger systems, you can install or reconfigure groups of pumps easily and quickly with the Clone Pump Settings function.



Grundfos is a full-line supplier of premium pump solutions for Water, Process, General and Machining industries. Our comprehensive range of pump solutions means that you can rely on Grundfos' know-how and our complete dedication to quality and service for your precise pump needs.

L-GP-SL-001 01/14 (US)

GRUNDFOS Kansas City
17100 West 118th Terrace
Olathe, Kansas 66061
Phone: (913) 227-3400
Fax: (913) 227-3500

GRUNDFOS Canada
2941 Brighton Road
Oakville, Ontario
L6H 6C9
Phone: (905) 829-9533
Fax: (905) 829-9512

GRUNDFOS Mexico
Boulevard TLC No. 15
Parque Industrial Stiva Aeropuerto
C.P. 66600 Apodaca, N.L. Mexico
Phone: 011-52-81-8144 4000
Fax: 011-52-81-8144 4010

www.grundfos.us

The name Grundfos, the Grundfos logo, and be think innovate are registered trademarks owned by Grundfos Holding A/S or Grundfos A/S, Denmark. All rights reserved worldwide.

GRUNDFOS 