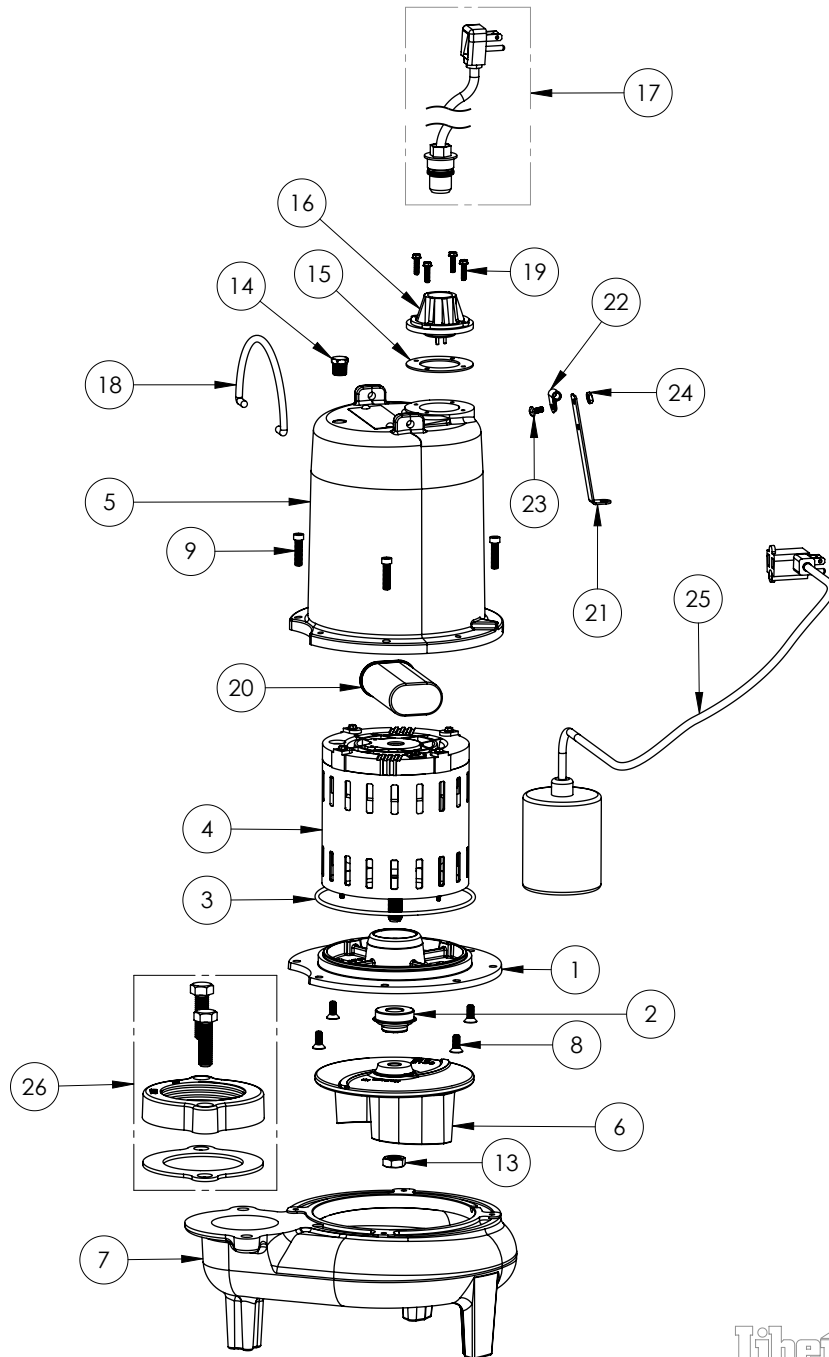


LE72A3

LE72A3 (B62)



**LE72A3****LE72A3 (B62)**

| #  | PART #  | DESCRIPTION   | QTY | Note |
|----|---------|---|-----|------|
| 1  | 53260BR | MOTOR SUPPORT PLATE                                       | 1   |      |
| 2  | K001717 | KIT, 5/8 UNITIZED 5120000 AND LIP SEAL 5860000            | 1   |      |
| 3  | 5617000 | O-RING  | 1   |      |
| 4  | 5330000 | MOTOR   | 1   | [1]  |
| 5  | 531400R | MOTOR COVER   | 1   | [1]  |
| 6  | 5130000 | IMPELLER, CAST IRON                                       | 1   |      |
| 7  | 531500R | VOLUTE HOUSING  | 1   |      |
| 8  | 8018000 | 1/4-20 x 5/8 SLOTTED FLAT HEAD BOLT                       | 4   |      |
| 9  | 8091000 | 1/4-20 x 1 HEX SOCKET HEAD BOLT                           | 4   |      |
| 13 | 8046000 | 1/2-20 HEX STAINLESS STEEL JAM NUT                        | 1   |      |
| 14 | 5071000 | BRASS OIL PLUG  | 1   |      |
| 15 | 5060000 | CORD PLATE GASKET   | 1   |      |
| 16 | 5014000 | CORD PLATE  | 1   |      |
| 17 | K001058 | POWER CORD, 10FT. 230V                                    | 1   |      |
| 18 | K001095 | STAINLESS STEEL HANDLE                                    | 1   |      |
| 19 | 8064000 | #8-32 x 5/8 HEX WASHER HEAD SCREW                         | 4   |      |
| 20 | 51190F0 | CAPACITOR   | 1   |      |
| 21 | 5070000 | FLOAT SWITCH SUPPORT                                      | 1   |      |
| 22 | 8014000 | CABLE CLAMP   | 1   |      |
| 23 | 8082000 | #10-24 x 3/8 EPOXY LOCK SCREW                             | 1   |      |
| 24 | 8002000 | #10-24 STAINLESS STEEL HEX                                | 1   |      |
| 25 | K001019 | 61140A0 PUMP SWITCH, 10' 230V, INCLUDES MOUNTING HARDWARE | 1   |      |
| 26 | K001222 | 3" DISCHARGE KIT  | 1   |      |

**PART NOTES:**

[1] - Part requires factory authorized service. Contact Liberty Pumps at 1-800-543-2550