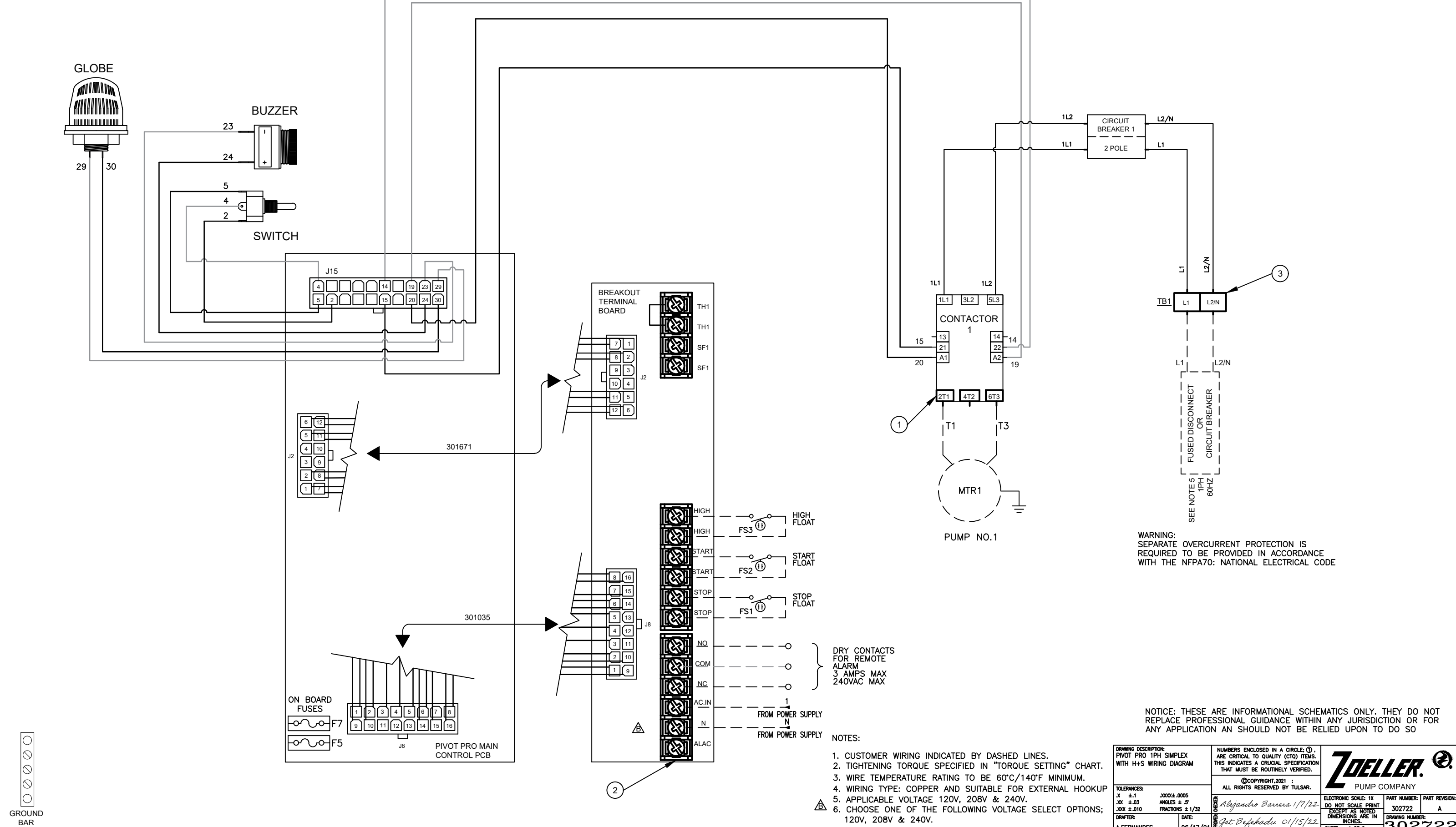


DRAWING REVISIONS				
LTR	BY	DATE	ECO #	DESCRIPTION
A	AF	06/21/21	11319	RELEASE
B	AF	11/05/21	11391	AC JUMPER WIRE REMOVED

CUSTOMER TORQUE SETTING		
NUMBER	COMPONENT	TORQUE
1	CONTACTORS	1.7 N.m. 15 lb-in
2	BREAKOUT TERMINAL BOARD	1.15 N.m. 10 lb-in
3	TERMINAL BLOCK	1.8 N.m. 16 lb-in



WARNING:
SEPARATE OVERCURRENT PROTECTION IS
REQUIRED TO BE PROVIDED IN ACCORDANCE
WITH THE NFPA70: NATIONAL ELECTRICAL CODE

NOTICE: THESE ARE INFORMATIONAL SCHEMATICS ONLY. THEY DO NOT
REPLACE PROFESSIONAL GUIDANCE WITHIN ANY JURISDICTION OR FOR
ANY APPLICATION AN SHOULD NOT BE RELIED UPON TO DO SO

- NOTES:
1. CUSTOMER WIRING INDICATED BY DASHED LINES.
 2. TIGHTENING TORQUE SPECIFIED IN "TORQUE SETTING" CHART.
 3. WIRE TEMPERATURE RATING TO BE 60°C/140°F MINIMUM.
 4. WIRING TYPE: COPPER AND SUITABLE FOR EXTERNAL HOOKUP
 5. APPLICABLE VOLTAGE 120V, 208V & 240V.
 6. CHOOSE ONE OF THE FOLLOWING VOLTAGE SELECT OPTIONS;
120V, 208V & 240V.

DRAWING DESCRIPTION: PIVOT PRO 1PH SIMPLEX WITH H+S WIRING DIAGRAM		NUMBERS ENCLOSED IN A CIRCLE (1), ARE CRITICAL TO QUALITY (CTQ) ITEMS. THIS INDICATES A CRUCIAL SPECIFICATION THAT MUST BE ROUTINELY VERIFIED.	
TOLERANCES: X ±.1 XX ±.03 XXX ±.010		©COPYRIGHT, 2021 : ALL RIGHTS RESERVED BY TULSAR.	
DRAFTER: A.FERNANDES		DATE: 06/17/21	
DRAWING NUMBER: 302722		PART NUMBER: PART REVISION: 302722 A	
SHEET: 1 OF 2		DRAWING NUMBER: 302722	



