

Trusted. Tested. Tough.®

Product information presented here reflects conditions at time of publication. Consult factory regarding discrepancies or inconsistencies.

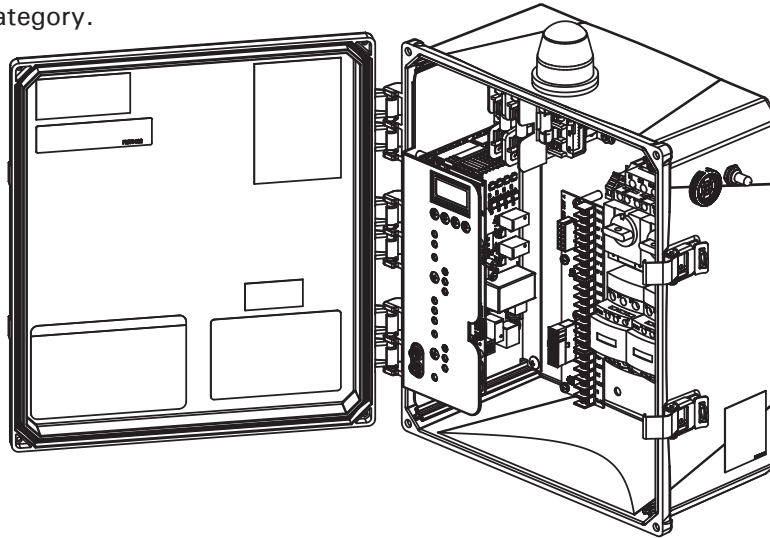


SECTION: 2.50.057
FM3462
0723
Supersedes
New

TECHNICAL DATA SHEET

Pivot® Pro + Series Control Panels

- Pivot** 1Ph control panel, highly featured
- Pivot Pro** 1Ph or 3Ph control panel with advanced features such as a user-friendly LCD interface and support for pump sensors and Z Control®
- Pivot Pro +** The Pivot Pro + control panel is a Pivot Pro control panel built with one or more options and usually requiring a larger enclosure. Reversing panels and 1Ph start kit panels are included in this category.



124D4-0001

SPECIFICATIONS

Certifications

- cULus and cCSAus certified to standard UL508
- FCC Class-B certification to ISED Canada ICES-003, Issue 6
- For outdoor or indoor use

Components

- Red alarm beacon with 360° visibility
- Audible alarm buzzer rated 95 db at 2' (0.6 m)
- SILENCE/RESET/TEST toggle switch with weatherproof rubber boot
- HAND/OFF/AUTO control are included for each pump
- RS-485 (12VDC, 2W) powered serial port for optional Z Control® Gateway connectivity
- Auxiliary output dry contacts (NO-COM-NC) terminals, Form C, 5A resistive load
- PUMP RUN dry contact, (NO-COM)
- Large NEMA 4X enclosures with lockable latch. See details chart for dimensions.

Power

- Control circuit powered by 120VAC, 60 Hz
- Alarm circuit can be powered by separate power feed, if needed
- Alarm and control circuits individually fused, 3A, fast-acting, 120VAC

- Circuit breaker protection on 1Ph models
- Multi-tap 200/230/460V transformer on 3Ph models
- Max alarm and control circuit power consumption: Simplex models 32W, Duplex models 40W
- Max standby power consumption: 5W
- Terminals for 120VAC control power, 120VAC alarm power, up to 4 float switches (duplex), pump input power
- 1Ph IEC motor contactors, models 120/208/240 VAC, 50/60Hz, up to 50A maximum
- 3PH IEC motor contactors, models 208/230/380/460/575 VAC, 60Hz

Field Wiring & Maintenance

- 4 enclosure mounting brackets are included
- 2 sets of wiring schematics and installation instructions are included along with an inside door mounted QR code for easy access to additional support material online
- All wires and terminal locations thoroughly labeled for easy identification
- All components are serviceable (See FM3452 for available replacement parts)

© Copyright 2023 Zoeller® Co. All rights reserved.

502-778-2731 | 800-928-7867 | 3649 Cane Run Road | Louisville, KY 40211-1961 | zoellerpumps.com

STANDARD FEATURES (For a more thorough description of features, see ZM3376 or FM3459 Panel Selection Guides, or FM3295 Cross Reference and Features Comparison List, or FM3272 Installation Instructions, or FM3394 Quick Reference Guide.)

- 5 year limited warranty
- RED/AMBER/GREEN LEDs for float switch indicators, Pump Run, High Water, System Ready, and HOA functions
- Ample room for field wiring
- TEST toggle will check all LEDs, globe, and horn
- Elapsed time and cycle counts via USB port & LCD
- Z Control® enabled (requires Wi-Fi Gateway 90002-0001)
 - o Connecting to the Z Control® Cloud allows remote access to view equipment status and adjust settings
 - o Configure alert settings for nearly instant email, text, and push notifications of changing conditions
 - o Free access to the Z Control® Cloud
 - o Easy setup and use
 - o Leverage this technology to reduce/eliminate unnecessary site trips and provide real-time peace of mind
- Lockable LCD menu allows for easy access to status, counters, and settings
- Adjustable settings (see Installation Instructions)
 - o ‘Smart’ or ‘Standard’ float logic (Smart logic will compensate for bad floats. Standard logic will operate like traditional panels.)
 - o CONTINUOUS RUN alarm: 20 minute default (enable or disable via USB port)
 - o HOA Pump Run & Service Off Timeouts (enable or disable via USB port)
 - Service OFF and Permanent OFF pump modes
 - Smart HOA timer prevents pump damage caused by accidental “ON”
 - Smart HOA includes a Service OFF reminder alarm
 - o Globe mode (solid, blink, or alarm-specific blink pattern)
 - o Duplex float configuration (Stop/Lead/Lag/High or Stop/Lead/High/Lag)
- Seal fail indicator/alarm for each pump (feature requires moisture sensor in pump)
- Thermal trip indicator/alarm for each pump (feature requires thermal sensor in pump)
- Lead/lag selector with pump run ratio settings
- Float switch logic choices: Smart or Relay, 3 or 4 float, SLLH or SLHL
- Current overload alarms (as applicable)
- Reversing Features: Panels with a “3” or “4” as the second digit in the part number are reversing panels.
- Start Kit Features. Panels containing start kits have a “7” as the third digit. The panel operates identical to a standard Pivot Pro.

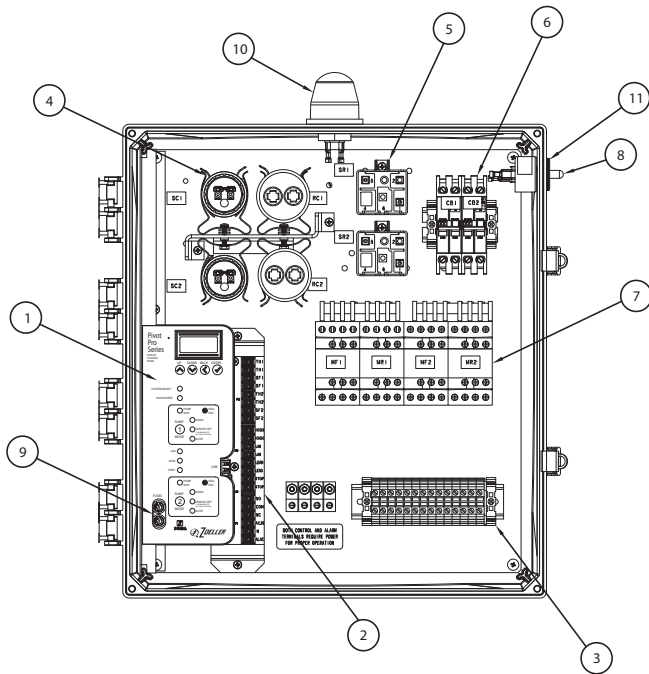
Alarm Conditions

Alarm Condition	User Interface LEDs						
	Latching	Globe	System Ready	High Water	Pump Run (1 or 2)	Pump Off (1 or 2)	Stop, Start/Lead, or Lag
Overload (3PH only)	No	Fast Blink	Off	Off	Solid Red	Off	Off
Failed Contactor	Yes	Fast Blink	Off	Off	Solid Red	Off	Off
Service Off Timeout	No	Double Blink	Off	Off	Off	Blinking Red	Off
Disabled Alarm Circuit	No	Double Blink	Off	Solid Red	Off	Off	Solid Red
Continuous Run	Yes	Solid	Off	Off	Blinking Amber	Off	Off
High Water Float Logic Error	Yes	Slow Blink	Off	Blinking Red	Off	Off	Off
Float Logic Error	Yes	Slow Blink	Off	Off	Off	Off	Blinking Red
Float Questionable	Yes	Slow Blink	Off	Off	Off	Off	Blinking Amber
High Water	Yes	Solid	Off	Solid Red	Off	Off	Off
Seal Fail Alarm	Yes	Fast Blink	Off	Off	Blinking Red	Off	Off
Thermal Alarm	Yes	Fast Blink	Off	Off	Blinking Red	Off	Off
High Control Voltage	Yes	Off	Blinking Green	Blinking Red	Blinking Red	Blinking Red	Blinking Red

COMMON PIVOT PRO CONTROL PANEL DETAILS

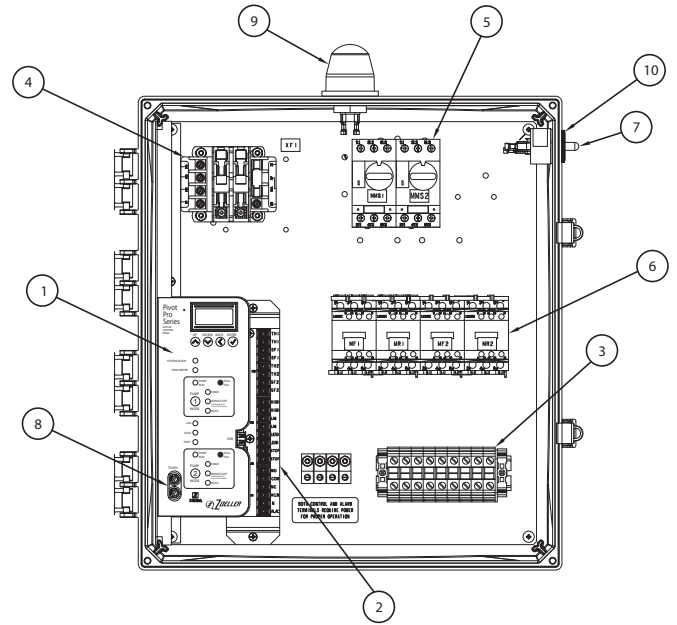
Item Number	Item Rev	Simplex or Duplex	Voltage	Phase	Amp Range	Breaker or Overload Rating	Dimensions L x W x H	Start Kit and/or Auto Reverse
21734-0001	A	Simplex	208/240	1	15-20	20	25" X 22" X 16"	841/842/7012/7013
217E4-0001	A	Simplex	240	1	6-10	15	25" X 22" X 16"	611/621/6120/6121
217G4-0001	A	Simplex	240	1	13-18	30	25" X 22" X 16"	631/6122
217H4-0001	A	Simplex	240	1	17-23	30	25" X 22" X 16"	641/6123
217Q4-0001	A	Simplex	240	1	20-25	30	25" X 22" X 16"	7110
217R4-0001	A	Simplex	240	1	24-32	50	25" X 22" X 16"	6220
217R4-0002	A	Simplex	240	1	24-32	50	25" X 22" X 16"	651/6124
217R4-0003	A	Simplex	240	1	24-32	50	25" X 22" X 16"	6111/E7111
217S4-0001	A	Simplex	240	1	30-40	50	25" X 22" X 16"	6221
22734-0001	A	Duplex	208/240	1	15-20	30	25" X 22" X 16"	841/842/7012/7013
227E4-0001	A	Duplex	240	1	6-10	15	25" X 22" X 16"	611/621/6120/6121
227G4-0001	A	Duplex	240	1	13-18	30	25" X 22" X 16"	631/6122
227H4-0001	A	Duplex	240	1	17-23	30	25" X 22" X 16"	641/6123
227Q4-0001	A	Duplex	240	1	20-25	30	25" X 22" X 16"	7110
227R4-0001	A	Duplex	240	1	24-32	50	35.5" X 27" X 16.5"	6220
227R4-0002	A	Duplex	240	1	24-32	50	25" X 22" X 16"	651/6124
227R4-0003	A	Duplex	240	1	24-32	50	25" X 22" X 16"	6111/E7111
227S4-0001	A	Duplex	240	1	30-40	50	35.5" X 27" X 16.5"	6221
234D4-0001	A	Simplex	200/230/460	3	4-6.3	4-6.3	22" X 20" X 12.5"	Auto Reverse
234E4-0001	A	Simplex	200/230/460	3	6-10	6-10	22" X 20" X 12.5"	Auto Reverse
234F4-0001	A	Simplex	200/230/460	3	9-14	9-14	22" X 20" X 12.3"	Auto Reverse
234G4-0001	A	Simplex	200/230/460	3	13-18	13-18	22" X 20" X 12.5"	Auto Reverse
234H4-0001	A	Simplex	200/230/460	3	17-23	17-23	22" X 20" X 12.5"	Auto Reverse
234Q4-0001	A	Simplex	200/230/460	3	20-25	20-25	22" X 20" X 12.5"	Auto Reverse
234R4-0001	A	Simplex	200/230/460	3	23-32	23-32	25" X 22" X 16"	Auto Reverse
236D4-0001	A	Simplex	575	3	4-6.3	4-6.3	22" X 20" X 12.5"	Auto Reverse
236E4-0001	A	Simplex	575	3	6-10	6-10	22" X 20" X 12.5"	Auto Reverse
236F4-0001	A	Simplex	575	3	9-14	9-14	22" X 20" X 12.5"	Auto Reverse
23734-0001	A	Simplex	208/230	1	15-20	30	22" X 20" X 12.5"	Auto Reverse, 840/7011
244D4-0001	A	Duplex	200/230/460	3	4-6.3	4-6.3	25" X 22" X 16"	Auto Reverse
244E4-0001	A	Duplex	200/230/460	3	6-10	6-10	25" X 22" X 16"	Auto Reverse
244F4-0001	A	Duplex	200/230/460	3	9-14	9-14	25" X 22" X 16"	Auto Reverse
244G4-0001	A	Duplex	200/230/460	3	13-18	13-18	25" X 22" X 16"	Auto Reverse
244H4-0001	A	Duplex	200/230/460	3	17-23	17-23	25" X 22" X 16"	Auto Reverse
244Q4-0001	A	Duplex	200/230/460	3	20-25	20-25	25" X 22" X 16"	Auto Reverse
244R4-0001	A	Duplex	200/230/460	3	23-32	23-32	35.5" X 27" X 16.5"	Auto Reverse
246D4-0001	A	Duplex	575	3	4-6.3	4-6.3	25" X 22" X 16"	Auto Reverse
246E4-0001	A	Duplex	575	3	6-10	6-10	25" X 22" X 16"	Auto Reverse
246F4-0001	A	Duplex	575	3	9-14	9-14	25" X 22" X 16"	Auto Reverse
24734-0001	A	Duplex	208/230	1	15-20	30	25" X 22" X 16"	Auto Reverse, 840/7011

PIVOT PRO+ 1PH DUPLEX REVERSING PANEL W/ START KIT



1. User Interface
2. Terminal Board
3. Pump and Power Terminals
4. Start and Run Capacitors
5. Voltage Sensing Relays
6. Circuit Breakers
7. Contactors
8. Test/Silence/Reset Switch
9. Fuses
10. Globe
11. Alarm Buzzer

PIVOT PRO+ 3PH DUPLEX REVERSING PANEL



1. User Interface
2. Terminal Board
3. Pump and Power Terminals
4. Transformer
5. Overloads
6. Contactors
7. Test/Silence/Reset Switch
8. Fuses
9. Globe
10. Alarm Buzzer