



Series 1535

Close Coupled Centrifugal Pumps

Replacement Parts

Index

How to use this Parts ListPage 3

1535 Pump Exploded ViewPage 4

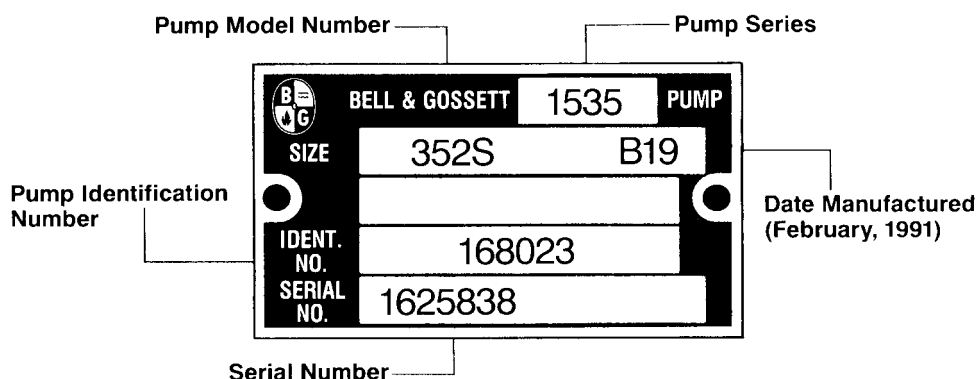
Replacement Parts For Pump Sizes 351-356Page 5

Replacement Parts For Pump Sizes 357-3511Page 6



How to use this PARTS LIST

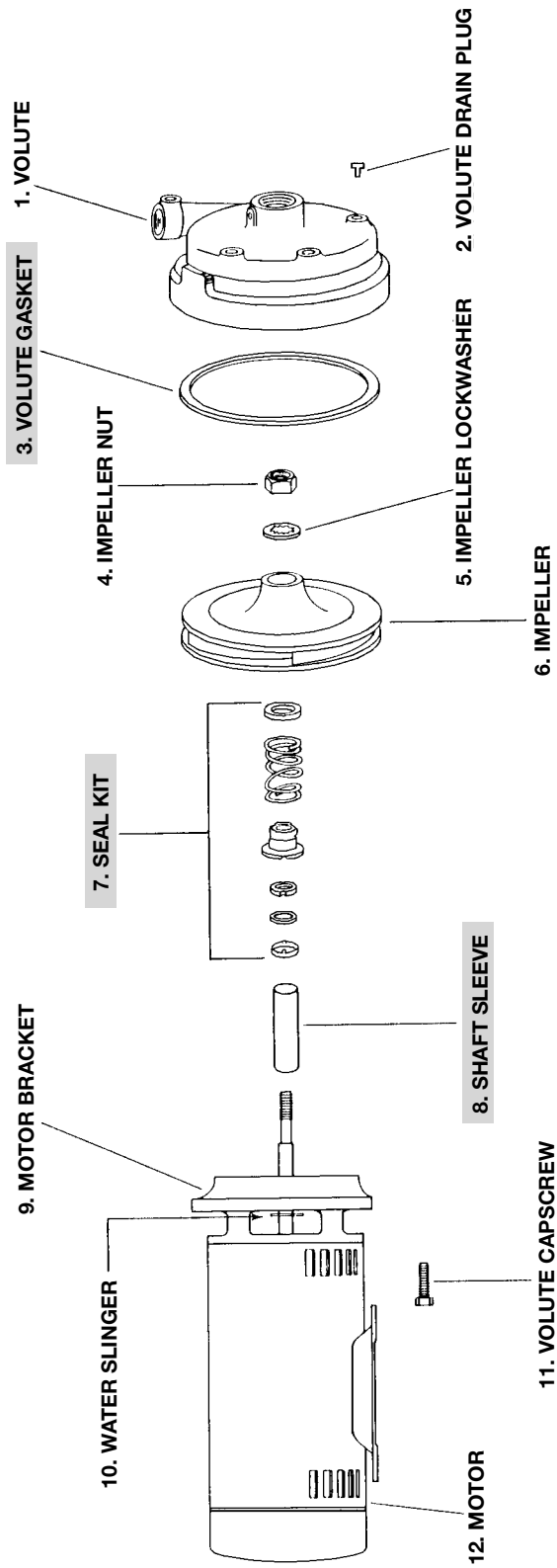
The pump nameplate identifies the pump series, pump model number and identification number as shown below.



The nameplate above identifies the pump as a 1535, model number 352S, with an identification number of 168023. The serial number specifically identifies the unit for future reference. **DO NOT REMOVE THE NAMEPLATE.** It is important when ordering replacement parts to furnish complete nameplate data.

To ensure the correct parts will be selected, follow the procedure below:

1. Determine from the nameplate the pump series and the pump model number.
2. Refer to the index for the page number of the parts breakdown for the specific model pump.
3. Find the proper column in the parts breakdown for the model number involved.
4. Select parts numbers using the drawing on page 4 for parts identification.
5. When replacing the motor, secure all information from the motor nameplate and use to select the proper motor. Always supply complete motor nameplate data when ordering replacement motors.



Series 1535 Pump

Exploded View

— Factory Recommended Spare Parts

PUMP MODELS 351 THRU 356

ITEM NO.	DESCRIPTION	351	352	353	354	355	356
1	Volute	186075	186075	186075	186075	186075	186075
2	Volute Drain Plug (4)	P39020	P39020	P39020	P39020	P39020	P39020
3	Volute Gasket	P57410	P57410	P57410	P57410	P57410	P57410
4	Impeller Nut	P00651	P00651	P00651	P00651	P59570	P59570
5	Impeller Lockwasher	P04660	P04660	P04660	P04660	P11220	P11220
6	Impeller	186364*	186363*	186362*	P58250	P58253	P56610
7	Seal Kit	118681	118681	118681	118681	186499	186499
8	Shaft Sleeve	186943	186943	186943	186943	186944	186944
9	Motor Bracket	P62872	P62872	P62872	P62872	P77067	P77067
10	Water Slinger	P77335	P77335	P77335	P77335	P81946	P81946
11	Volute Capscrew (8)	P10620	P10620	P10620	P10620	P10359	P10359
	Motor Capscrew (4)	DJ0063	DJ0063	DJ0063	DJ0063	DJ0063	DJ0063
	Shaft Key	P04945	P04945	P04945	P04945	P51750	P51750

POWER PACKS

PUMP SIZE	EQUIVALENT SIZE	IMPELLER DIAMETER	1 PHASE 115/230	3 PHASE TRI VOLT	HP
351S & 351T	1" AAB	3 ⁷ / ₁₆ "	169066	169071	1/3
352S & 352T	1" AAB	4"	169067	169072	1/2
353S & 353T	1" AAB	4 ³ / ₈ "	169068	169073	3/4
354S & 354T	1" AAB	4 ⁹ / ₁₆ "	169069	169074	1
355S & 355T	1" AAB	5"	169216	M99136	1 ¹ / ₂
356T	1" AAB	5 ¹ / ₄ "	—	M99137	2

— Factory Recommended Spare Parts

*Full size impeller diameter.

See below if impeller needs to be trimmed to a smaller diameter:

For 186364 smaller than 3⁷/₁₆" diameter, use P58251

For 186363 smaller than 4" diameter, use P58280

For 186362 smaller than 4³/₈" diameter, use P58252

PUMP MODELS 357 THRU 3511

ITEM NO.	DESCRIPTION	357	358	359	3510	3511
1	Volute	186087	186087	186087	186087	186087
2	Volute Drain Plug (4)	P39020	P39020	P39020	P39020	P39020
3	Volute Gasket	P57410	P57410	P57410	P57410	P57410
4	Impeller Nut	P00651	P59570	P59570	P59570	P59570
5	Impeller Lockwasher	P04660	P11220	P11220	P11220	P11220
6	Impeller	P58340	P58254	P58255	P58256	P58257
7	Seal Kit	118681	186499	186499	186499	186499
8	Shaft Sleeve	186943	186944	186944	186944	186944
9	Motor Bracket	P62872	P77067	P77067	P77067	P77067
10	Water Slinger	P77335	P81946	P81946	P81946	P81946
11	Volute Capscrew (8)	P10620	P10359	P10359	P10359	P10359
	Motor Capscrew (4)	DJ0063	DJ0063	DJ0063	DJ0063	DJ0063
	Shaft Key	P04945	P51750	P51750	P51750	P51750

POWER PACKS

PUMP SIZE	EQUIVALENT SIZE	IMPELLER DIAMETER	1 PHASE 115/230	3 PHASE TRI VOLT	HP
357S & 357T	1½" AAB	3 ⁷ / ₁₆ "	169069	169074	1
358S & 358T	1½" AAB	3 ¹¹ / ₁₆ "	169216	M99136	1½
359T	1½" AAB	4"	—	M99137	2
3510T	1½" AAB	4 ⁷ / ₁₆ "	—	M99138	3
3511T	1½" AAB	5 ¹ / ₈ "	—	M99139	5

— Factory Recommended Spare Parts



Xylem Inc.
8200 N. Austin Avenue
Morton Grove, Illinois 60053
Phone: (847) 966-3700
Fax: (847) 965-8379
www.bellgossett.com

Bell & Gossett is a trademark of Xylem Inc. or one of its subsidiaries.
© 2013 Xylem Inc. CP-305J-PL May 2010