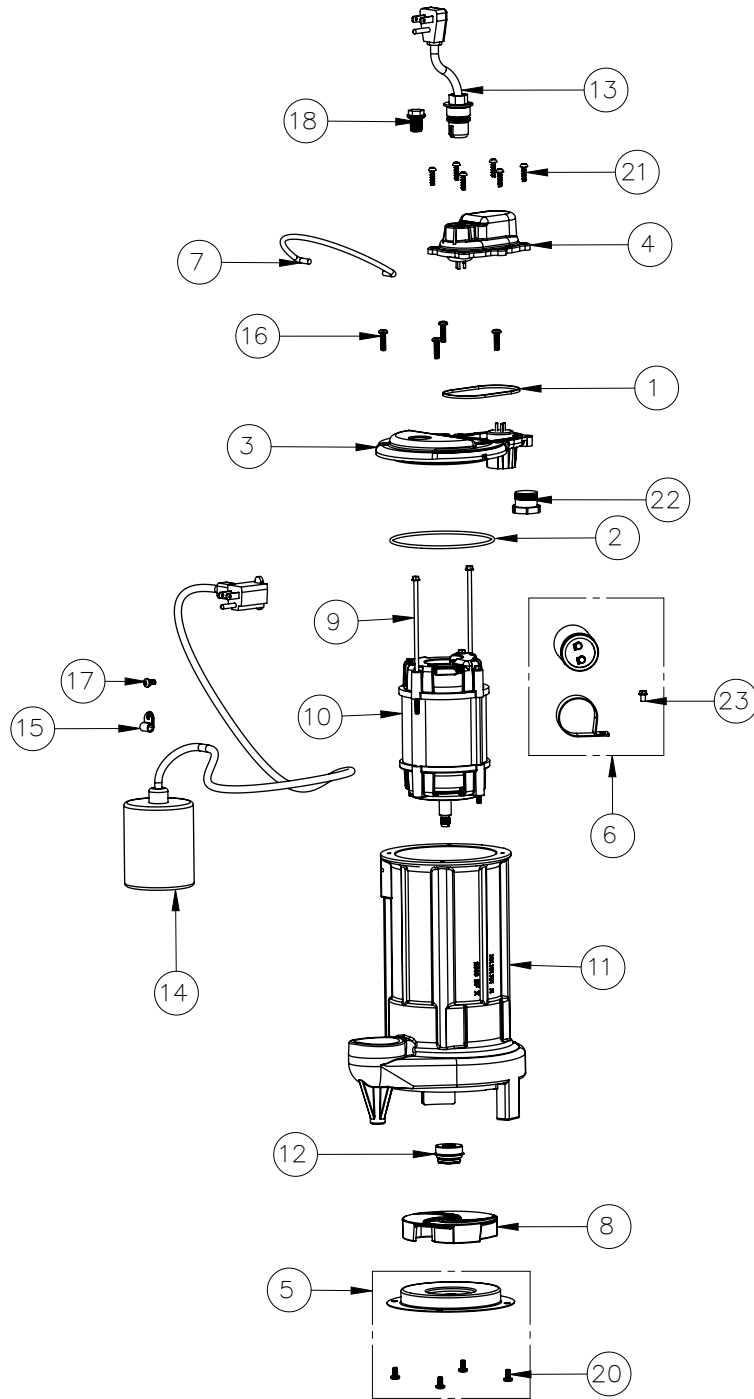


293HV (B39)



293HV**293HV (B39)**

#	PART #	DESCRIPTION	QTY	Note
1	K001046	SEALRING, CHAMBER COVER	1	
2	2357000	O-RING	1	[1]
3	240600B	MOTOR COVER	1	
4	240700B	CHAMBER COVER	1	
5	K001349	290 SERIES STAMPING INLET KIT	1	
6	K001354	CAPACITOR KIT	1	
7	K001082	HANDLE	1	
8	K001351	290 SERIES IMPELLER KIT	1	
9	2904E20	8-32 SCREW 5.688	1	
10	2426200	MOTOR, 230V	1	[1]
11	290300J	CAST IRON HOUSING	1	[1]
12	50980A0	1/2 INCH UNITIZED SEAL	1	[1]
13	K001058	POWER CORD, 10FT. 230V	1	
14	K001019	61140A0 PUMP SWITCH, 10' 230V, INCLUDES MOUNTING HARDWARE	1	
15	8014000	CABLE CLAMP	1	
16	8072000	#10 - 24 x 3/4" SCREW	4	
17	8082000	#10-24 x 3/8 EPOXY LOCK SCREW	1	
18	8089000	OIL PLUG, O-RING ASSEMBLY	1	
20	8092000	#10 - 24 x 3/8" SCREW	4	
21	8104200	#10 HILO X 5/8" STAINLESS STEEL SCREW	6	
22	8105000	PROTECTIVE CAP	1	
23	8160000	CAPACITOR SCREW	1	

PART NOTES:

[1] - Part requires factory authorized service. Contact Liberty Pumps at 1-800-543-2550