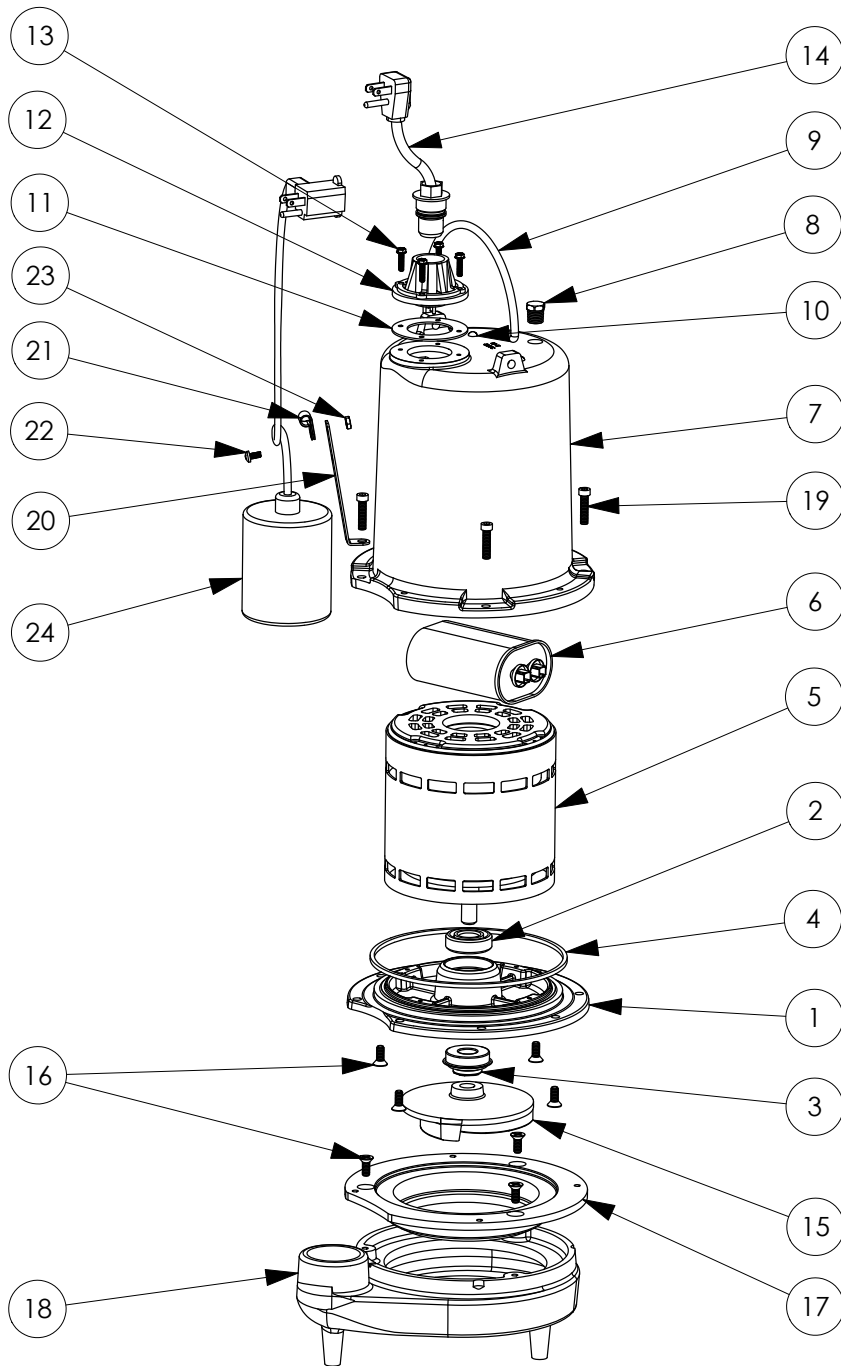


FL52A-2 (B10)



**FL52A-2****FL52A-2 (B10)**

| #  | PART #  | DESCRIPTION                                    | QTY | Note |
|----|---------|--|-----|------|
| 1  | 510100R | MOTOR SUPPORT PLATE                            | 1   |      |
| 2  | 5124000 | BEARING  | 1   |      |
| 3  | K001717 | KIT, 5/8 UNITIZED 5120000 AND LIP SEAL 5860000 | 1   |      |
| 4  | 5107000 | MOTOR COVER SEALRING                           | 1   | [1]  |
| 5  | 5394000 | MOTOR  | 1   | [1]  |
| 6  | 5308000 | CAPACITOR                                      | 1   |      |
| 7  | 527700R | MOTOR COVER                                    | 1   |      |
| 8  | 5071000 | BRASS OIL PLUG                                 | 1   |      |
| 9  | K001095 | STAINLESS STEEL HANDLE                         | 1   |      |
| 10 | 8033000 | #8 x 1/4 STAINLESS STEEL SCREW                 | 2   |      |
| 11 | 5060000 | CORD PLATE GASKET                              | 1   |      |
| 12 | 5014000 | CORD PLATE                                     | 1   |      |
| 13 | 8064000 | #8-32 x 5/8 HEX WASHER HEAD SCREW              | 4   |      |
| 14 | K001059 | POWER CORD, 230V, 25 FOOT CORD                 | 1   |      |
| 15 | 53030B0 | IMPELLER, CAST IRON                            | 1   |      |
| 16 | 8018000 | 1/4-20 x 5/8 SLOTTED FLAT HEAD BOLT            | 7   |      |
| 17 | 530200R | ADAPTER PLATE                                  | 1   |      |
| 18 | 530100R | VOLUTE HOUSING                                 | 1   |      |
| 19 | 8091000 | 1/4-20 x 1 HEX SOCKET HEAD BOLT                | 4   |      |
| 20 | 5070000 | FLOAT SWITCH SUPPORT                           | 1   |      |
| 21 | 8067000 | CABLE CLAMP                                    | 1   |      |
| 22 | 8082000 | #10-24 x 3/8 EPOXY LOCK SCREW                  | 1   |      |
| 23 | 8002000 | #10-24 STAINLESS STEEL HEX                     | 1   |      |
| 24 | K001066 | FLOAT SWITCH, 230V, 25 FOOT CORD               | 1   |      |

**PART NOTES:**

[1] - Part requires factory authorized service. Contact Liberty Pumps at 1-800-543-2550