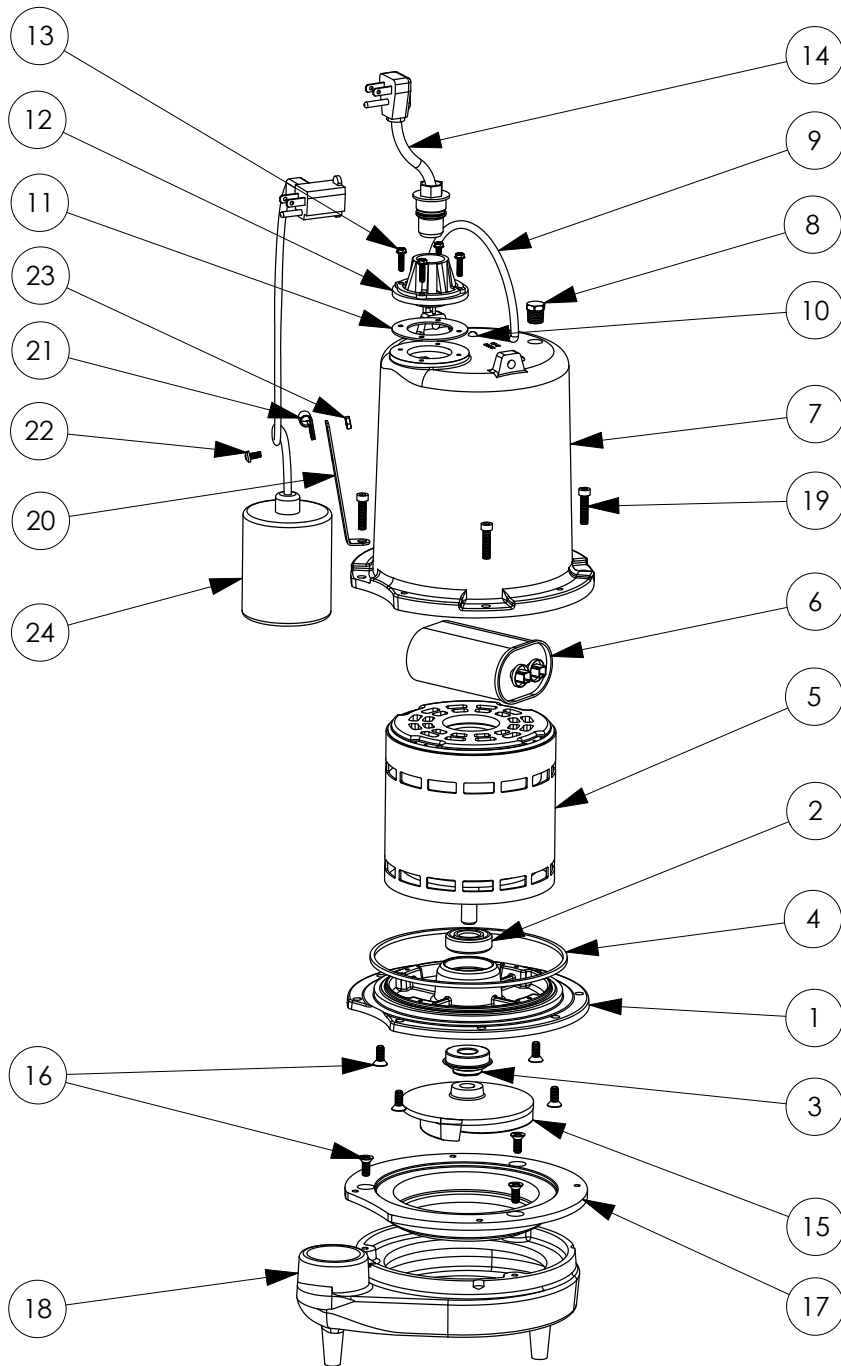


FL52A (B10)



**FL52A****FL52A (B10)**

#	PART #	DESCRIPTION	QTY	Note
1	510100R	MOTOR SUPPORT PLATE	1	
2	5124000	BEARING	1	
3	K001717	KIT, 5/8 UNITIZED 5120000 AND LIP SEAL 5860000	1	
4	5107000	MOTOR COVER SEALRING	1	[1]
5	5394000	MOTOR	1	[1]
6	5308000	CAPACITOR	1	
7	527700R	MOTOR COVER	1	
8	5071000	BRASS OIL PLUG	1	
9	K001095	STAINLESS STEEL HANDLE	1	
10	8033000	#8 x 1/4 STAINLESS STEEL SCREW	2	
11	5060000	CORD PLATE GASKET	1	
12	5014000	CORD PLATE	1	
13	8064000	#8-32 x 5/8 HEX WASHER HEAD SCREW	4	
14	K001058	POWER CORD, 10FT. 230V	1	
15	53030B0	IMPELLER, CAST IRON	1	
16	8018000	1/4-20 x 5/8 SLOTTED FLAT HEAD BOLT	7	
17	530200R	ADAPTER PLATE	1	
18	530100R	VOLUTE HOUSING	1	
19	8091000	1/4-20 x 1 HEX SOCKET HEAD BOLT	4	
20	5070000	FLOAT SWITCH SUPPORT	1	
21	8067000	CABLE CLAMP	1	
22	8082000	#10-24 x 3/8 EPOXY LOCK SCREW	1	
23	8002000	#10-24 STAINLESS STEEL HEX	1	
24	K001065	61290A0 FLOAT SWITCH, 230V, 10 FOOT CORD	1	

**PART NOTES:**

[1] - Part requires factory authorized service. Contact Liberty Pumps at 1-800-543-2550