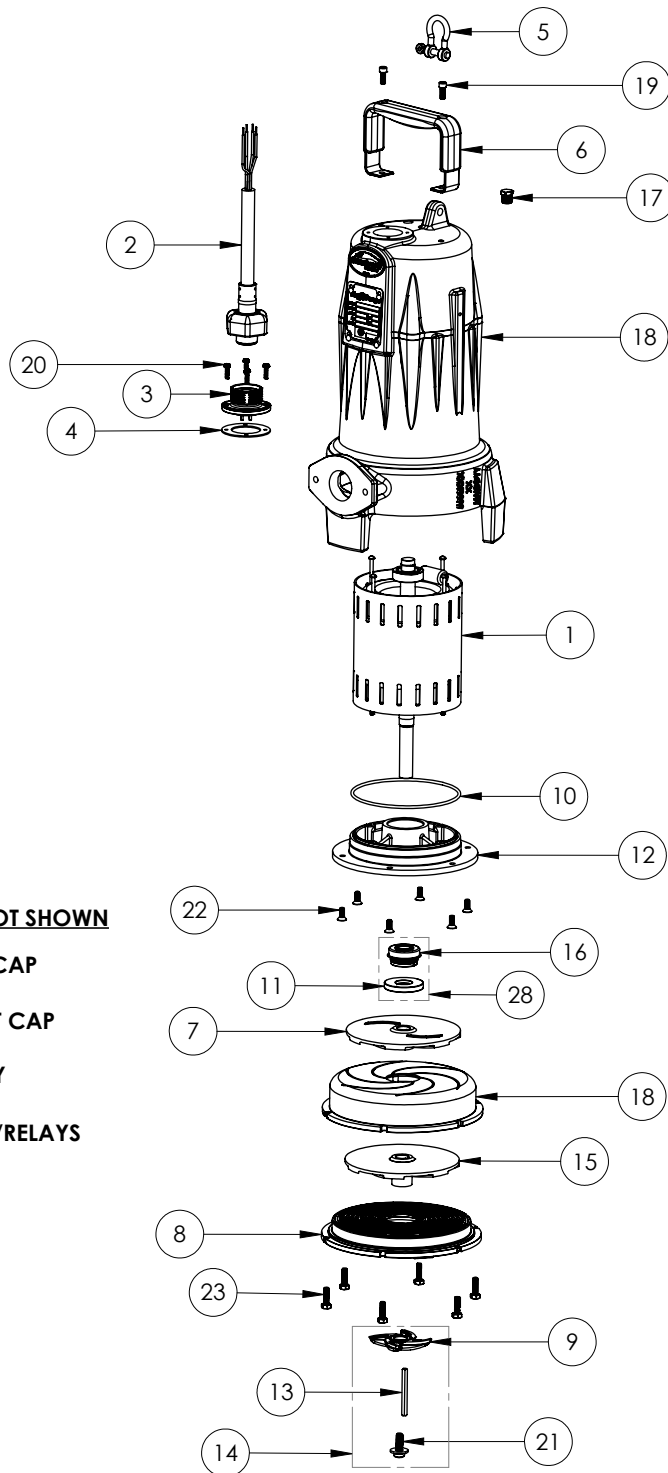
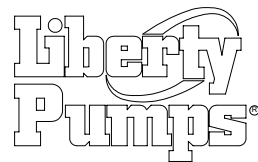


LSGX202M-C (B52)



ITEMS NOT SHOWN

- 24 RUN CAP
- 25 START CAP
- 26 RELAY
- 27 CAPS/RELAYS



LSGX202M-C

LSGX202M-C (B52)

#	PART #	DESCRIPTION	QTY	Note
1	5741000	MOTOR 2 STAGE W/O CAPS	1	
2	K001358	POWER CORD, 35FT	1	
3	5629M00	PURCHASED CORD PLATE, 4 PIN	1	
4	5060000	CORD PLATE GASKET	1	
5	K001680	SHACKLE KIT	1	
6	5613000	HANDLE	1	
7	46600A0	TOP IMPELLER	1	
8	K001395	CUTTER PLATE	1	
9	5616900	ROTARY CUTTER	1	
10	5617000	O-RING	1	
11	5618000	DOUBLE LIP SEAL	1	
12	5851000	MOTOR PLATE	1	
13	56350B0	KEY	1	
14	K001139	ROTARY CUTTER KIT	1	[1]
15	46600B0	BOTTOM IMPELLER, STAINLESS STEEL	1	
16	5633000	3/4" UNITIZED SHAFT SEAL	1	[2]
17	50710A0	PIPE PLUG, 1/4" HEX HD BRASS NPTF	1	
18	573300R	OMNIVORE HOUSING, 2 STAGE	1	
19	8103000	SCREW 1/4-20x5/8" HX SKT SS	2	
20	8064000	#8-32 x 5/8 HEX WASHER HEAD SCREW	4	
21	56362B0	FLANGED IMPELLER BOLT, M8 THREAD	1	
22	8018000	1/4-20 x 5/8 SLOTTED FLAT HEAD BOLT	1	
23	8024000	1/4-20x7/8" HEX HEAD SS BOLT	6	
24	K001228	RUN CAPACITOR	1	
25	K001227	START CAPACITOR	1	
26	K001315	RELAY	1	
27	K001316	CAPS / RELAY	1	
28	K001484	OMNIVORE SEAL KIT, INCLUDES 5618000 AND 5633000	1	[3]

PART NOTES:

- [1] - ForLSG GrinderCutter Replacment Instructions see LSG Grinder Cutter Replacement
- [2] - Part requires factory authorized service. Contact Liberty Pumps at 1-800-543-2550
- [3] - Omnivore maintenance procedure [click here](#)