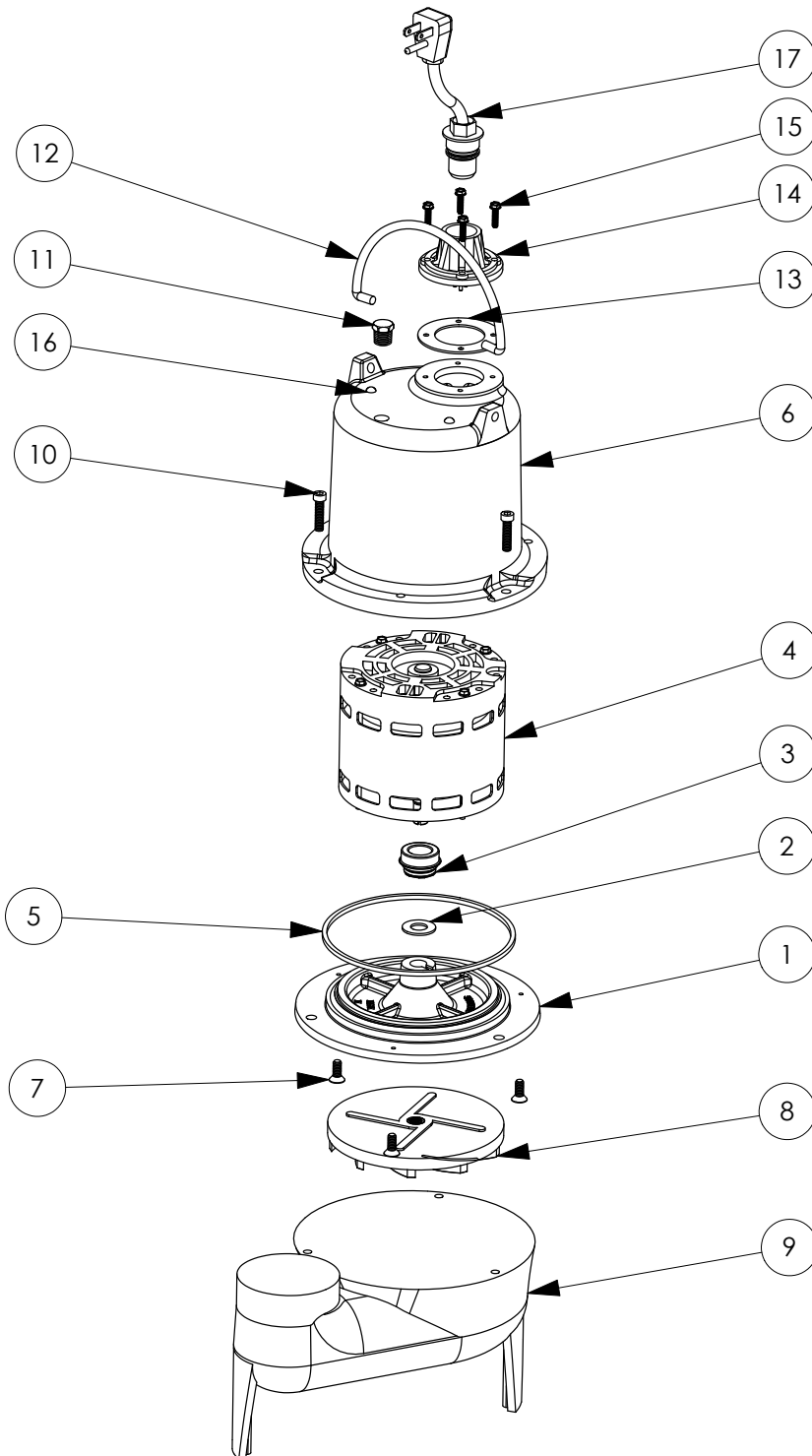


HT41M-2

# HT41M-2 (B10)



**HT41M-2****HT41M-2 (B10)**

#	PART #	DESCRIPTION	QTY	Note
1	5052000	MOTOR SUPPORT PLATE	1	
2	5395000	THRUST WASHER	1	
3	5098000	1/2 INCH UNITIZED SEAL	1	
4	5317000	MOTOR ASSEMBLY, .5HP	1	
5	5066000	SEALRING, MOTOR COVER, #254S	1	[1]
6	53500AR	MOTOR CAP	1	
7	8018000	1/4-20 x 5/8 SLOTTED FLAT HEAD BOLT	3	
8	K001036	IMPELLER	1	
9	500100R	HOUSING, VOLUTE	1	
10	8091000	1/4-20 x 1 HEX SOCKET HEAD BOLT	3	
11	5071000	BRASS OIL PLUG	1	
12	K001095	STAINLESS STEEL HANDLE	1	
13	5060000	CORD PLATE GASKET	1	
14	5014000	CORD PLATE	1	
15	8064000	#8-32 x 5/8 HEX WASHER HEAD SCREW	4	
16	8033000	#8 x 1/4 STAINLESS STEEL SCREW	2	
17	K001061	POWER CORD, 115V, 25FT	1	

**PART NOTES:**

[1] - Part requires factory authorized service. Contact Liberty Pumps at 1-800-543-2550