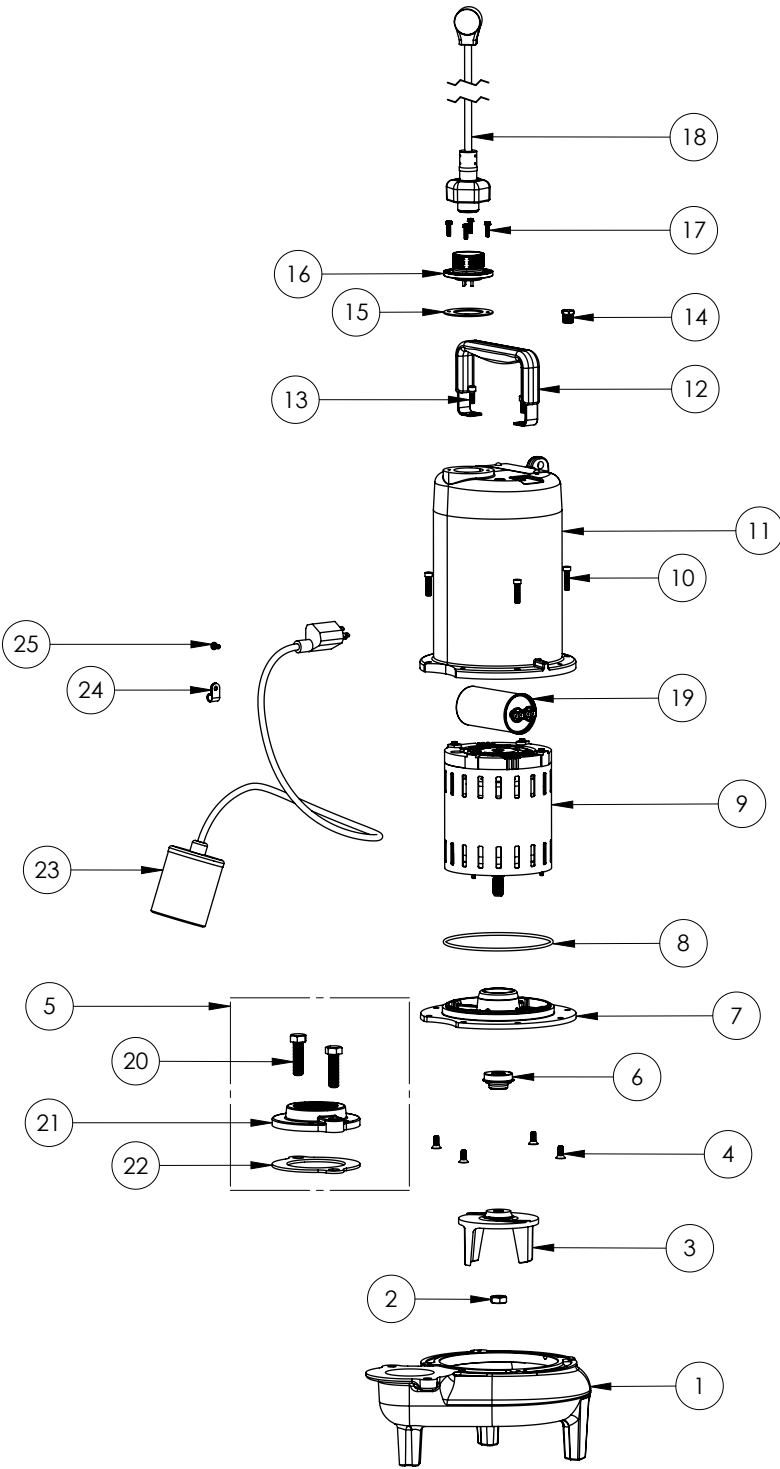


LEH102A2-3 (B72)



LEH102A2-3

LEH102A2-3 (B72)

#	PART #	DESCRIPTION	QTY	Note
1	531500R	VOLUTE HOUSING	1	
2	8046000	1/2-20 HEX STAINLESS STEEL JAM NUT	1	
3	K001488	51300A0 IMPELLER KIT, INCLUDES 1/2" JAM NUT	1	
4	8018000	1/4-20 x 5/8 SLOTTED FLAT HEAD BOLT	1	
5	K001221	2" DISCHARGE KIT	1	
6	K001717	KIT, 5/8 UNITIZED 5120000 AND LIP SEAL 5860000	1	
7	53260BR	MOTOR SUPPORT PLATE	1	
8	5617000	O-RING	4	
9	5335000	MOTOR	4	
10	8091000	1/4-20 x 1 HEX SOCKET HEAD BOLT	1	
11	531400R	MOTOR COVER	1	[1]
12	3411200	HANDLE	1	
13	8033000	#8 x 1/4 STAINLESS STEEL SCREW	2	
14	50710A0	PIPE PLUG, 1/4" HEX HD BRASS NPTF	1	
15	5060000	CORD PLATE GASKET	1	
16	K001216	5619000, CORDPLATE	1	
17	8064000	#8-32 x 5/8 HEX WASHER HEAD SCREW	1	
18	K001383	56310C0 35' CORD KIT	1	
19	5019000	CAPACITOR 45uF 370VAC	1	
20	8037000	1/2-13 x 1-3/4 STAINLESS STEEL BOLT	2	
21	512100R	2" DISCHARGE FLANGE	1	
22	5129000	FLANGE GASKET, FITS 2" OR 3"	1	
23	K001444	61290C0, 230V 35' SWITCH, INCLUDES CLAMP AND SCREW	1	
24	8067000	CABLE CLAMP	1	
25	8082000	#10-24 x 3/8 EPOXY LOCK SCREW	1	

PART NOTES:

[1] - Part requires factory authorized service. Contact Liberty Pumps at 1-800-543-2550