

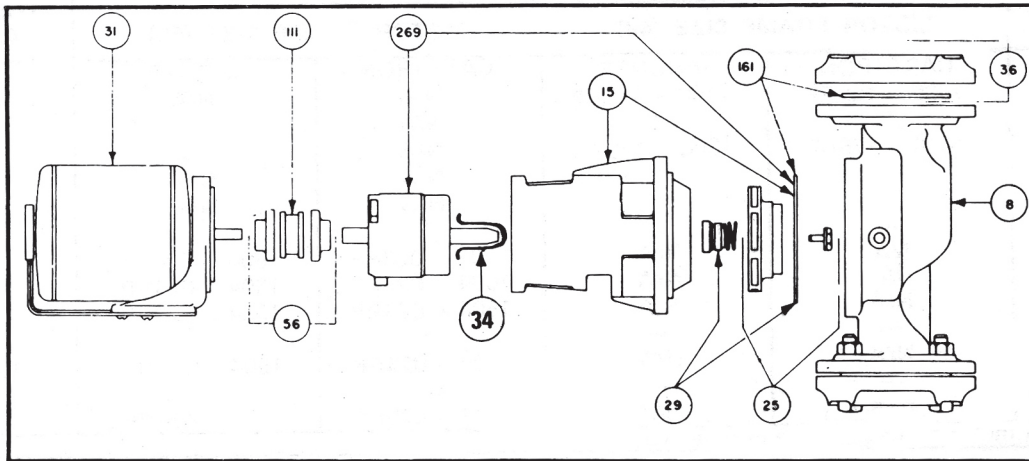
## 121 thru 138 Pumps / 1600 Series Pumps

SUPERSEDES: March 31, 2017  
Form No. F304-001

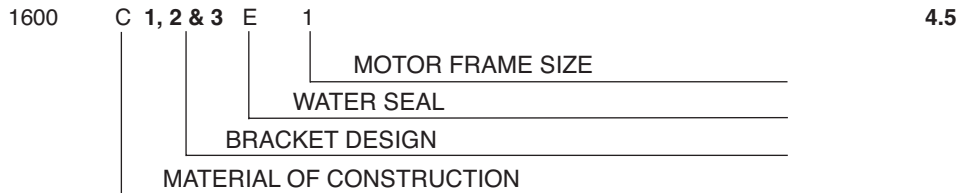
EFFECTIVE: March 26, 2019

**IMPORTANT:** When ordering, always specify part number, part name, and complete model number of pump. Nameplate located on front of casing. For OEM models, please consult OEM.

### REPLACEMENT PARTS FOR (-9) AND SERIAL NUMBER CARTRIDGE DESIGN PUMPS



#### SERIAL NUMBER CODE



MATERIAL OF CONSTRUCTION	
	X    O    O    O
A	CAST IRON PUMP & IMPELLER (OBSOLETE)
B	ALL BRONZE PUMP & IMPELLER (OBSOLETE)
C	CAST IRON PUMP AND BRONZE IMPELLER (OBSOLETE)
D	ALL STAINLESS STEEL PUMP & IMPELLER
E	CAST IRON PUMP AND STAINLESS STEEL IMPELLER
N	ALL STAINLESS STEEL PUMP & IMPELLER (NSF 61 ONLY)

MOTOR FRAME SIZE*/SHAFT DIA.				
			O    O    O    X    O	
1	48	FRAME	(1/4, 1/3, 1/2 HP)	1/2"
2	56	FRAME	(3/4, 1 HP)	5/8"
3	56	FRAME	(1 1/2, &2 HP)	5/8"
4	56	FRAME	(3 HP)	5/8"

\*Refer to standard motors only. See nameplate for other motors.

WATER SEAL KIT, ITEM #29 5/8" SHAFT	
	O    O    X    O    O
E (Standard)	1600-868CRP Ceramic/Carbon/EPT (replaces 1600-846CRP, 1600-170RP and 1600 170ERP)
S (High Temp)	1600-868SRP Sealide-C/Sealide-C/Viton (replaces 1600-846SRP and 1600-170HRP)

FLANGE TYPE	
	O    O    O    O    X
N	NPT (STANDARD)
D	DIN (EXPORT)

BRACKET DESIGN	
	O    X    O    O    O
	1, 2 & 3 CURRENT STYLE PUMPS

ITEM #8 REPLACEMENT BODY			BODY GASKETS	WEAR RING
PUMP MOD. NO	CAST IRON	STAINLESS STEEL (replaces bronze)	CAST IRON / BRZ / SS	BRONZE - used on SS casings only
121	121-018RP	121-018SRP	1600 - 024RP	1600 - 908L
122		"	"	1600 - 908L
131, 32, 33 & 38'	133-150RP	133-150SRP	133 - 014RP	1600 - 907L
1600, 10, 11'	1610-001RP	1610-001SRP	1600 - 024RP	1600 - 906L
1602, 1604'	N/A	N/A	133 - 014RP	N/A
1612, 14, 15	1614-001RP	1614-001SRP	"	1600 - 906L
1616, 18, 19	1618-004RP	1618-004SRP	1618 - 006	1600 - 906L
1620, 22, 24	1634-001RP	1634-001SRP	133 - 014RP	1600 - 907L
1630, 1632	"	"	"	1600 - 907L
1634, 1635	"	"	"	1600 - 907L
1636, 1638	1640-002RP	1640-002SRP	1618 - 006	1600 - 907L
1640, 1641	"	"	"	1600 - 907L

ITEM #15 REPLACEMENT BRACKET					ITEM #161 GASKET KIT
PUMP MOD. NO.	MOTOR FRAME SIZE (48)		MOTOR FRAME SIZE (56)		
	CAST IRON	BRONZE / SS	CAST IRON	BRONZE / SS	
121, 122	1600-155RP	1600-156RP	N/A	N/A	1600-050RP
1600, 10, 11	"	"	N/A	N/A	"
1602, 1604	1600-175RP	1600-176RP	N/A	N/A	"
1612, 20, 30	"	"	N/A	N/A	"
131, 132	"	"	N/A	N/A	"
1615 *	-	-	-	-	"
133, 138	N/A	N/A	1604-023RP	1604-024RP	"
1614, 22, 24	N/A	N/A	1604-023RP	1604-024RP	"
1632, 34	N/A	N/A	1604-023RP	1604-024RP	"
1635 *	-	-	-	-	"
1616, 36	N/A	N/A	1604-025RP	1604-026RP	1618-006RP
1619 *	-	-	-	-	"
1638, 40, 41	N/A	N/A	1604-025RP	1604-026RP	"

\*Select bracket, per motor frame size code in serial number

ITEM #25 REPLACEMENT IMPELLER ASSEMBLY								
PUMP NO.	(-9)PUMPS	CURRENT	DIA		PUMP NO.	(-9) PUMPS	CURRENT	DIA.
			-9	CURRENT				
121, 122	121-142SRP	121-142SRP	4.30	4.30	1618	1618-001SRP	N/A	7.900
131	131-075SRP	1630-023SRP	4.80	4.40	1619*	N/A	1619-001SRP	
132	132-063SRP	1630-022SRP	5.20	4.90	1620	1620-022SRP	N/A	5.100
133	133-075SRP	1632-022SRP	5.75	5.65	1622	1622-020SRP	N/A	5.850
138	138-037SRP	1634-023SRP	6.25	6.15	1624	1624-040SRP	N/A	6.500
1600	1600-179SRP	1610-020SRP	4.75	4.50	1630	1630-022SRP	1630-022SRP	4.900
1602	1602-025SRP	N/A		5.500	1632	1632-022SRP	1632-022SRP	5.650
1604	1604-028SRP	N/A		6.200	1634	1634-023SRP	1634-023SRP	6.150
1610	1610-019SRP	1610-019SRP		4.750	1635*	N/A	1635-001SRP	-
1611*	N/A	1611-001SRP		-	1636	1636-001SRP	1636-001SRP	6.400
1612	1612-019SRP	1612-019SRP		5.750	1638	1638-001SRP	1638-001SRP	6.900
1614	1614-018SRP	1614-01SRP		6.35	1640	1640-001SRP	1640-001SRP	7.900
1615*	N/A	1615-001SRP		-	1641*	N/A	1641-001SRP	-
1616	1616-002SRP	1616-002SRP		7.100				

\*When ordering, please advise diameter of impeller.

ITEM #31 REPLACEMENT MOTOR ASSEMBLY *			
HP	115/60/1	115/230/60/1	200-230/460/60/3 **
1/4	121-151RP	N/A	N/A
1/3	131-143RP	N/A	N/A
1/2	N/A	132-096RP	1661-022RP
3/4	N/A	133-119RP	1661-023RP
1	N/A	138-119RP	1661-024RP
1 1/2	N/A	1636-013RP	1661-025RP
2	N/A	1638-012RP	1661-026RP
3	N/A	N/A	1661-027RP

\*\* Replaces 200/60/3 and 230/460/60/3 models below.

HP	200-230/460/60/3 Motor No. **	** Replaces below	
		230/460/60/3	200/60/3
1/4			
1/3			
1/2	1661-022RP	132-097RP	132-066RP
3/4	1661-023RP	133-134RP	133-140RP
1	1661-024RP	138-142RP	138-148RP
1 1/2	1661-025RP	1636-010RP	1636-019RP
2	1661-026RP	1638-010RP	1638-015RP
3	1661-027RP	1640-010RP	1640-013RP

\*When ordering other than standard, refer to nameplate, then consult factory.

Note (1) When replacing item #8 body on 131, 132, 133, 138 and 1600C—1&—9, you must also order current style impeller.

Note (2) Body for the 1602 & 1604 are no longer available. Consult factory.

ITEM #36 REPLACEMENT FLANGE SET			GASKET SETS	
PUMP MOD. NO.	STAINLESS STEEL (replaces bronze)	CAST IRON	CURRENT	OLD STYLE PUMPS
121	1600-033SRP	1600-033RP	133-152RP	131-019RP
122	1600-034SRP	1600-034RP	"	"
131, 32, 33 & 38	"	"	"	"
1600, 10, 11	1600-031SRP	1600-031RP	1600-169RP	1600-872RP
1602, 1604	"	"	"	"
1612, 14, 15	"	"	"	"
1616, 18, 19	1600-032SRP	1600-032RP	"	"
1620, 22, 24	"	"	"	"
1630, 1632	"	"	"	"
1634, 1635	"	"	"	"
1636, 1638	1600-174SRP	1600-174RP	"	N/A
1640, 1641	"	"	"	N/A

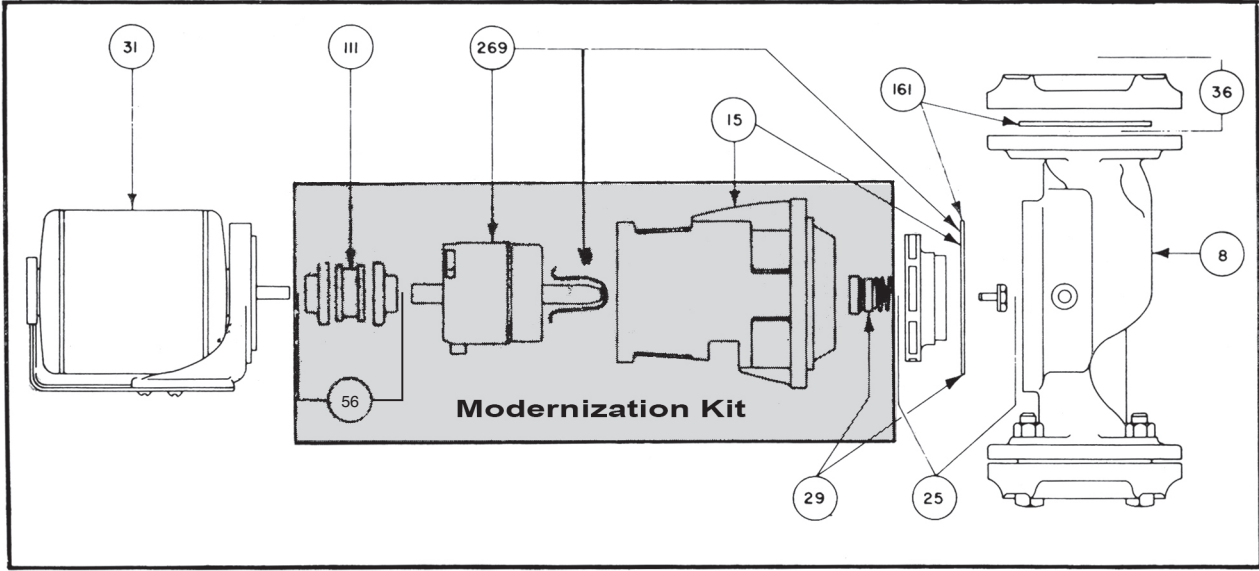
MOTOR ASSEMBLY LESS MOTOR				
HP	115/60/1	115/230/60/1	200/60/3	230/460/60/3
1/4	121-056RP	N/A	N/A	N/A
1/3	121-056RP	N/A	N/A	N/A
1/2	N/A	132-033RP	132-033RP	132-033RP
3/4	N/A	133-031RP	133-031RP	133-031RP
1	N/A	133-031RP	133-031RP	133-031RP
1 1/2	N/A	133-031RP	133-031RP	133-031RP
2	N/A	1636-004RP	1636-004RP	1636-004RP
3	N/A	N/A	1636-004RP	1636-004RP

121-079RP Motor Assy. L/Motor, for 56 Frame Motors on 48 Frame Pumps

OTHER REPLACEMENT PARTS			
ITEM#	DESCRIPTION	PART NUMBER	WHERE USED
34	SHAFT SLEEVE	1600-205RP	All -9 and Serial Number Pumps
56	COUPLER 4J (5/8 X 5/8")	1624-053RP	Inline Pumps 3/4 thru 2 HP, 56 frame motor
56	COUPLER 5J (5/8 X 5/8")	1624-041RP	All Inline Pumps 3 HP
111	RUBBER INSERT	1624-004RP	All 4J Couplers
111	RUBBER INSERT	1624-020RP	All 3J Couplers
111	RUBBER INSERT	900-512	All 5J Couplers
269	CARTRIDGE ASSY.	1600-160RP-1	All 9- and Serial Number Pumps
	ADAPTER PLATE	1600-194RP	All (Left Hand Thread)
	IMPELLER BOLT	1600-215RP	All
	IMPELLER WASHER	1600-151RP	All
56	COUPLER 3J (5/8 X 1/2")	1624-043RP	All Inline Pumps 1/4 & 1/3 HP
56	COUPLER 4J (5/8 X 1/2")	1624-030RP	Inline Pumps 1/2 HP, 48 frame motor

# REPLACEMENT PARTS FOR OLD STYLE PUMPS AND CIRCULATORS \*

\*121+122-3-7, 132+133-3-6; 1600, 1602, 1604, 1610, 1612, 1614, 1620, 1622,1624, 1630, 1632, 1634-1 +C1.



## OTHER REPLACEMENT PARTS

ITEM#	DESCRIPTION	WHERE USED
ITEM #8	BODY	Same as -9 and Serial Number Pumps.
ITEM #25	IMPELLER AND SHAFT ASSEMBLY	No longer available. Must purchase Item #74 Modernization Kit listed below, Plus -9 IMPELLER
ITEM #29	SEAL KIT (1/2")	Part No. 1600-055RP
ITEM #31	MOTOR ASSEMBLY	Same as -9 and Serial Number Pumps.
ITEM #36	FLANGE SET	Same as -9 and Serial Number Pumps.
ITEM #56	COUPLER	Same as -9 and Serial Number Pumps.
ITEM #111	RUBBER INSERT	Same as -9 and Serial Number Pumps.
ITEM #161	GASKET KIT	Same as -9 and Serial Number Pumps.

## ITEM #74 MODERNIZATION KIT \*\*

PUMP NO.	MOTOR FAME SIZE (48)		MOTOR FAME SIZE (56)	
	CAST IRON	BRONZE	CAST IRON	BRONZE
121,122	121-154RP	122-002RP	N/A	N/A
131, 132 <sup>2</sup>	131-144RP	132-145RP	133-147RP	138-153RP
133, 138	N/A	N/A	"	"
1600, 1610	121-154RP	122-002RP	N/A	N/A
1602, 1604 <sup>2</sup>	131-144RP	132-145RP	133-147RP	133-147RP
1612, 1620 <sup>2</sup>	"	"	133-147RP	138-153RP
1630 <sup>2</sup>	"	"	"	"
1614, 1622	N/A	N/A	"	"
1624, 1632	N/A	N/A	"	"
1634	N/A	N/A	"	"

Note (2) Select modernization kit per motor frame size. Select impellers per selection chart on previous page, under -9 column.

**Taco Comfort Solutions**® A Taco Family Company

Taco, Inc., 1160 Cranston Street, Cranston, RI 02920 | Tel: (401) 942-8000 | FAX: (401) 942-2360

Taco (Canada), Ltd., 8450 Lawson Road, Suite #3, Milton, Ontario L9T 0J8 | Tel: (905) 564-9422 | FAX: (905) 564-9436

Visit our web site: [www.TacoComfort.com](http://www.TacoComfort.com) | Printed in USA | ©2019 Taco, Inc.

