

Product information presented here reflects conditions at time of publication. Consult factory regarding discrepancies or inconsistencies.



MAIL TO: P.O. BOX 16347 • Louisville, KY 40256-0347  
SHIP TO: 3649 Cane Run Road • Louisville, KY 40211-1961  
TEL: (502) 778-2731 • 1 (800) 928-PUMP • FAX: (502) 774-3624

Visit our website:  
zoellerpumps.com

## REPLACEMENT PARTS LIST FOR MODELS:

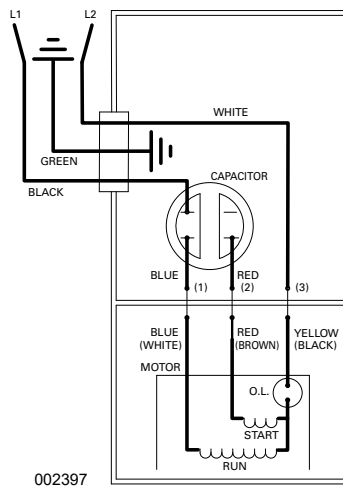
SCREW IN STATOR MOTOR DESIGN  
FOR GLUE IN STATOR MOTOR DESIGN  
(SEE PAGE 5)

**N270 NONAUTOMATIC 115V**  
**E270 NONAUTOMATIC 230V**  
**N4270 NONAUTOMATIC 115V**  
**E4270 NONAUTOMATIC 230V**

### TO ORDER REPLACEMENT PARTS

PLEASE FURNISH THE FOLLOWING INFORMATION:

- Model number
- Part number of pump
- Part number and description of part



WIRING DIAGRAM FOR MODELS  
"N270-F, E270-F, N4270-F, E4270-F"  
1/20 thru Current

# REPLACEMENT PARTS LIST FOR SINGLE SEAL MODELS "N270" AND "E270"

See page 4 for illustration.

REF NO.	QTY	Kit	DESCRIPTION	NOTES	N270-F 01/20 thru CURRENT.	E270-F 01/20 thru CURRENT.
1	1		HANDLE		267032	267032
2	1		CASE ASSEMBLY		267051	267051
3	1	*	CASE GASKET		267007	267007
4	1		POWER CORD - 115V	3	011551	N/A
			POWER CORD - 230V		N/A	003618
5	1	*	CORD SEAL ASSEMBLY		156778	156778
6	1		MOTOR HOUSING ASSEMBLY		156811	156811
7	1		STATOR ASSEMBLY - 115V	3	156808	N/A
			STATOR ASSEMBLY - 230V		N/A	156812
8	1		ROTOR & BEARING ASSEMBLY		156777	156777
9	1	*	ROTOR BEARING		009540	009540
10	1	*	21.5 Oz OIL CAN		010330	010330
11	1	*	SHAFT SEAL ASSEMBLY		011681	011681
12	1	*	MOTOR HOUSING SEAL		034007	034007
13	1		BASE		014961	014961
14	2		HANDLE RETAINERS		267053	267053
15	1	*	WIRE PACK		011548	011548
16	1		CAPACITOR ASSEMBLY		156807	156807
17	1		PUMP HOUSING		155321	155321
18	1		IMPELLER		152770	152770
19	2	*	TEST PLUG		034090	034090
20	4	*	SCREW - CASE (1/4-20X3/4)		001916	001916
21	2	*	SCREW - RETAINER (10-24 X3/8)		001883	001883
22	2	*	SCREW - GROUND & CAPACITOR (6-32X1/4)		001877	001877
23	3	*	THRU WALL TERMINAL		003402	003402
24	1		BASE O-RING SEAL		005701	005701
25	10		SCREW - BASE (10-10X1)		005326	005326
26	4	*	SCREW - MOTOR HOUSING (1/4-20X7/8)		012491	012491
27	2	*	SCREW - STATOR (8-32 X 4-9/32)		155319	155319
<input type="checkbox"/>	1		REBUILD KIT		156775	156775

\* Items included in rebuild kit.       Not shown in illustration.

## Service parts notes:

- 1) If an "X" follows model no., or date mfg. on brass ID tag, consult factory for ordering any parts.
- 2) See FM0160 Parts Price Sheet for listing of parts prices.
- 3) "N/A" indicates not applicable.

# REPLACEMENT PARTS LIST FOR DOUBLE SEAL MODELS "N4270" AND "E4270"

See page 4 for illustration.

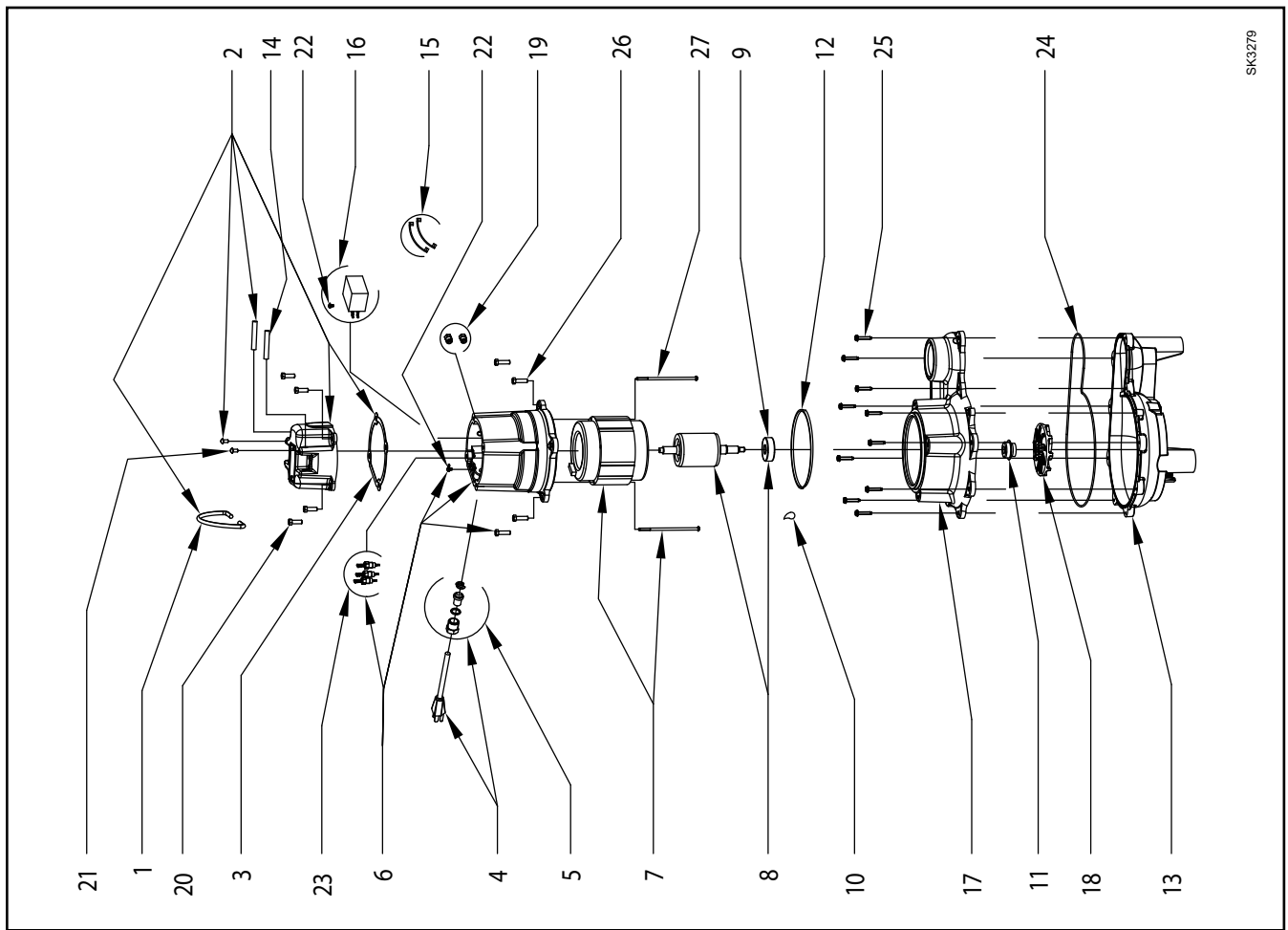
REF NO.	QTY	Kit	DESCRIPTION	NOTES	N270-F 01/20 thru CURRENT.	E270-F 01/20 thru CURRENT.
1	1		HANDLE		267032	267032
2	1		CASE ASSEMBLY		267051	267051
3	1	*	CASE GASKET		267007	267007
4	1		POWER CORD - 115V	3	011551	N/A
			POWER CORD - 230V		N/A	003618
5	1	*	CORD SEAL ASSEMBLY		156778	156778
6	1		MOTOR HOUSING ASSEMBLY		156811	156811
7	1		STATOR ASSEMBLY - 115V	3	156808	N/A
			STATOR ASSEMBLY - 230V		N/A	156812
8	1		ROTOR & BEARING ASSEMBLY		156814	156814
9	1	*	ROTOR BEARING		009540	009540
10	1	*	28 Oz OIL CAN		010331	010331
11	1	*	12 Oz OIL CAN		010158	010158
12	2	*	SHAFT SEAL ASSEMBLY		011681	011681
13	2	*	MOTOR HOUSING & ADAPTER SEAL		034007	034007
14	1		BASE		008646	008646
15	2		HANDLE RETAINERS		267053	267053
16	1	*	WIRE PACK		011548	011548
17	1		CAPACITOR ASSEMBLY		156807	156807
18	1		ADAPTER		156813	156813
19	1		PUMP HOUSING		155742	155742
20	1		IMPELLER		152770	152770
21	3	*	TEST PLUG		034090	034090
22	9	*	SCREW - CASE & BASE (1/4-20X3/4)		001916	001916
23	3	*	SCREW - RETAINER & BASE (10-24 X3/8)		001883	001883
24	2	*	SCREW - GROUND & CAPACITOR (6-32X1/4)		001877	001877
25	5	*	THRU WALL TERMINAL		003402	003402
26	1	*	SNAP RING & WASHER		010167	010167
27	8	*	SCREW - MOTOR HOUSING & ADAPTER (1/4-20X7/8)		012491	012491
28	2	*	SCREW - STATOR (8-32 X 4-9/32)		155319	155319
<input type="checkbox"/>	1		REBUILD KIT		156776	156776

\* Items included in rebuild kit.       Not shown in illustration.

### Service parts notes:

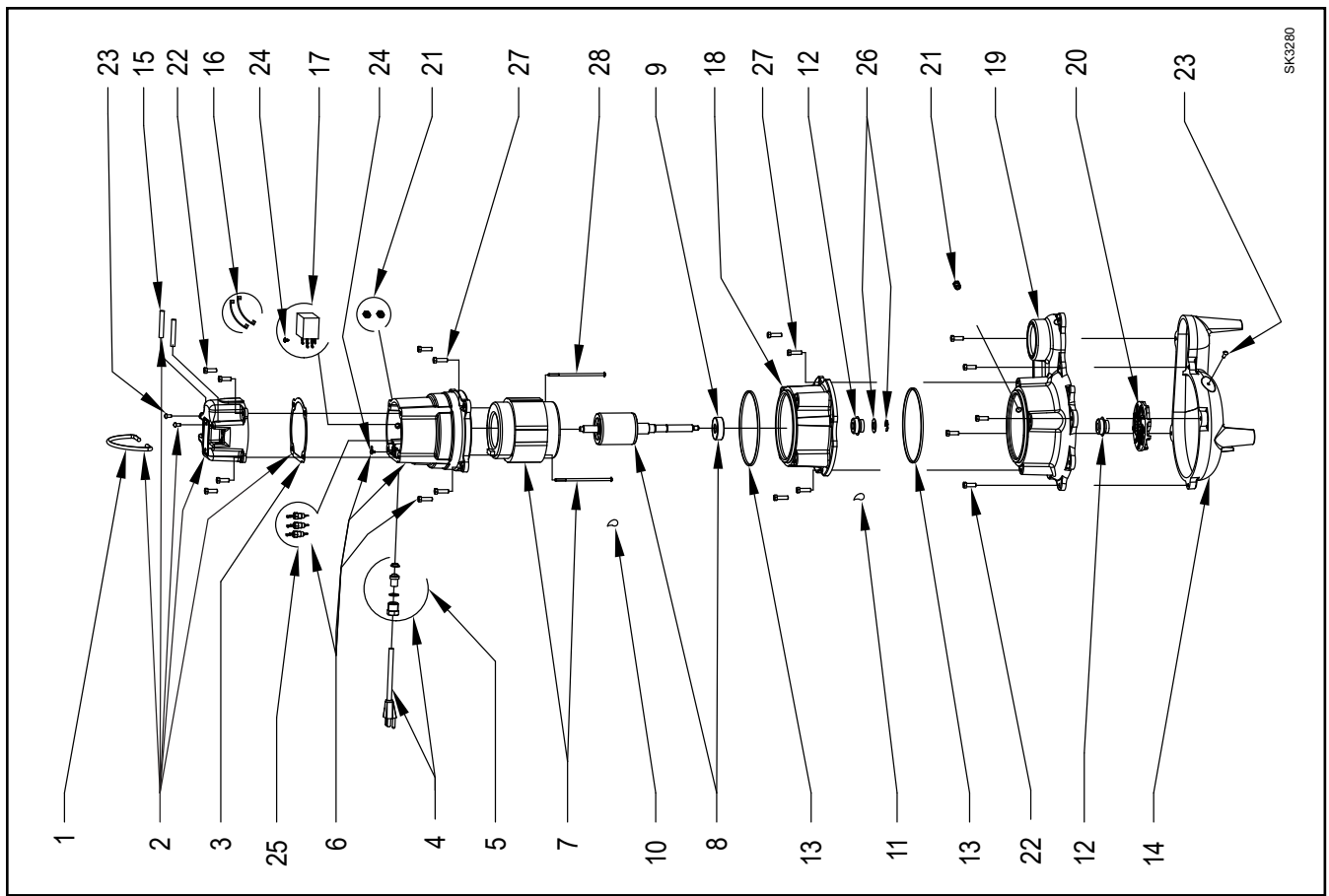
- 1) If an "X" follows model no., or date mfg. on brass ID tag, consult factory for ordering any parts.
- 2) See FM0160 Parts Price Sheet for listing of parts prices.
- 3) "N/A" indicates not applicable.

REPLACEMENT PARTS ILLUSTRATION FOR MODELS "N270" AND "E270"



SK3279

REPLACEMENT PARTS ILLUSTRATION FOR MODELS "N4270" AND "E4270"



SK3280

# REPLACEMENT PARTS LIST FOR MODELS:

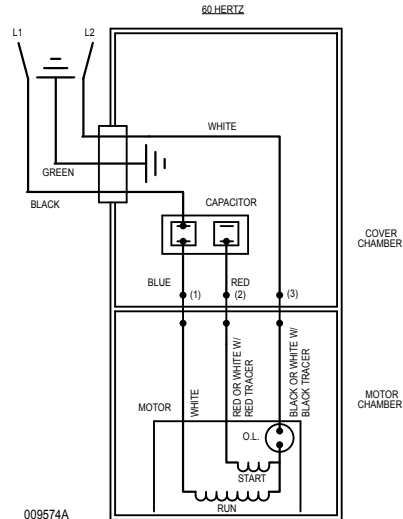
**N270 NONAUTOMATIC 115V**  
**E270 NONAUTOMATIC 230V**  
**N4270 NONAUTOMATIC 115V**  
**E4270 NONAUTOMATIC 230V**

Consult factory for all other models

### ***TO ORDER REPLACEMENT PARTS***

**PLEASE FURNISH THE FOLLOWING INFORMATION:**

- Model number
- Part number of pump
- Part number and description of part



WIRING DIAGRAM FOR MODELS  
"N270-F, E270-F, N4270-F, E4270-F"  
6/95 thru 12/19



**REPLACEMENT PARTS LIST FOR DOUBLE SEAL MODELS "N4270" and "E4270".**

See page 8 for illustration.

REF NO.	DESCRIPTION	QTY	MODELS:										E4270-E		
			N4270-A	N4270-B	N4270-C	N4270-D	N4270-E	E4270-A	E4270-B	E4270-C	E4270-D	E4270-E			
	NOTES		6/95 thru 5/97	6/97 thru 3/07	4/07 thru 4/08	5/08 thru 8/09	9/09 thru 12/19	6/95 thru 5/97	6/97 thru 3/07	4/07 thru 6/08	6/97 thru 3/07	4/07 thru 6/08	7/08 thru 12/08	1/09 thru 12/19	
1	HANDLE	1	267032	267032	267032	267032	267032	267032	267032	267032	267032	267032	267032	267032	267032
2	CASE ASSEMBLY	1	267051	011549	011549	011549	011549	011549	011549	011549	011549	011549	011549	011549	011549
3	CASE GASKET	1	267007	267007	267007	267007	267007	267007	267007	267007	267007	267007	267007	267007	267007
4	POWER CORD	1	010155	011551	011551	011551	011551	011551	011551	011551	011551	011551	011551	011551	011551
5	SEAL ASSEMBLY POWER	1	010154	010154	010154	010154	010154	010154	010154	010154	010154	010154	010154	010154	010154
6	MOTOR HOUSING ASM/SOURCE	1	010156	010156	010156	010156	010156	010156	010156	010156	010156	010156	010156	010156	010156
	MOTOR HOUSING ASM/ZT	1	N/A	N/A	N/A	N/A	N/A	N/A	N/A	N/A	N/A	N/A	N/A	N/A	N/A
7	ROTOR & BRG ASM/SOURCE	1	010986	010986	010986	010986	010986	010986	010986	010986	010986	010986	010986	010986	010986
	ROTOR & BRG ASM/ZT	1	N/A	N/A	N/A	N/A	N/A	N/A	N/A	N/A	N/A	N/A	N/A	N/A	N/A
8	36.5 OZ OIL CAN	1	010331	010331	010331	010331	010331	010331	010331	010331	010331	010331	010331	010331	010331
9	16 OZ OIL CAN	1	010158	010158	010158	010158	010158	010158	010158	010158	010158	010158	010158	010158	010158
10	SEAL ASSEMBLY	2	011681	011681	011681	011681	011681	011681	011681	011681	011681	011681	011681	011681	011681
11	SQUARE RING SEAL	2	267006	267006	267006	267006	267006	267006	267006	267006	267006	267006	267006	267006	267006
12	BASE	1	153009	153009	153009	153009	153009	153009	153009	153009	153009	153009	153009	153009	153009
13	HANDLE RETAINERS	2	267053	267053	267053	267053	267053	267053	267053	267053	267053	267053	267053	267053	267053
14	TERM INSULATOR	2	001797	N/A	N/A	N/A	N/A	N/A	N/A	N/A	N/A	N/A	N/A	N/A	N/A
15	WIRE PACK	1	010159	011548	011548	011548	011548	011548	011548	011548	011548	011548	011548	011548	011548
16	CAPACITOR ASSEMBLY	1	010160	011550	011550	011550	011550	011550	011550	011550	011550	011550	011550	011550	011550
17	BEARING	1	009540	009540	009540	009540	009540	009540	009540	009540	009540	009540	009540	009540	009540
18	ADAPTER	1	011679	011679	011679	011679	011679	011679	011679	011679	011679	011679	011679	011679	011679
19	PUMP HOUSING	1	010939	010939	010939	010939	010939	010939	010939	010939	010939	010939	010939	010939	010939
20	IMPELLER	1	011690	011690	011690	011690	011690	011690	011690	011690	011690	011690	011690	011690	011690
21	TEST PLUG	3	034090	034090	034090	034090	034090	034090	034090	034090	034090	034090	034090	034090	034090
22	SCREW 1/4-20X3/4	13	001916	001916	001916	001916	001916	001916	001916	001916	001916	001916	001916	001916	001916
23	SCREW 10-24X3/8	2	001883	001883	001883	001883	001883	001883	001883	001883	001883	001883	001883	001883	001883
24	SCREW 6-32X7/16	1	004644	004644	004644	004644	004644	004644	004644	004644	004644	004644	004644	004644	004644
25	WASHER #6	1	002117	002117	002117	002117	002117	002117	002117	002117	002117	002117	002117	002117	002117
26	GROUND SCREW	3	001877	001877	001877	001877	001877	001877	001877	001877	001877	001877	001877	001877	001877
27	THRU WALL TERMINAL	5	003402	003402	003402	003402	003402	003402	003402	003402	003402	003402	003402	003402	003402
28	SNAP RING & WASHER	1	010167	010167	010167	010167	010167	010167	010167	010167	010167	010167	010167	010167	010167
29	SCREW S	4	012491	012491	012491	012491	012491	012491	012491	012491	012491	012491	012491	012491	012491
30	CAP BRACKET	1	153350	153350	153350	153350	153350	153350	153350	153350	153350	153350	153350	153350	153350
⊠	REBUILD KIT	1	010166	010166	010166	010166	010166	010166	010166	010166	010166	010166	010166	010166	010166

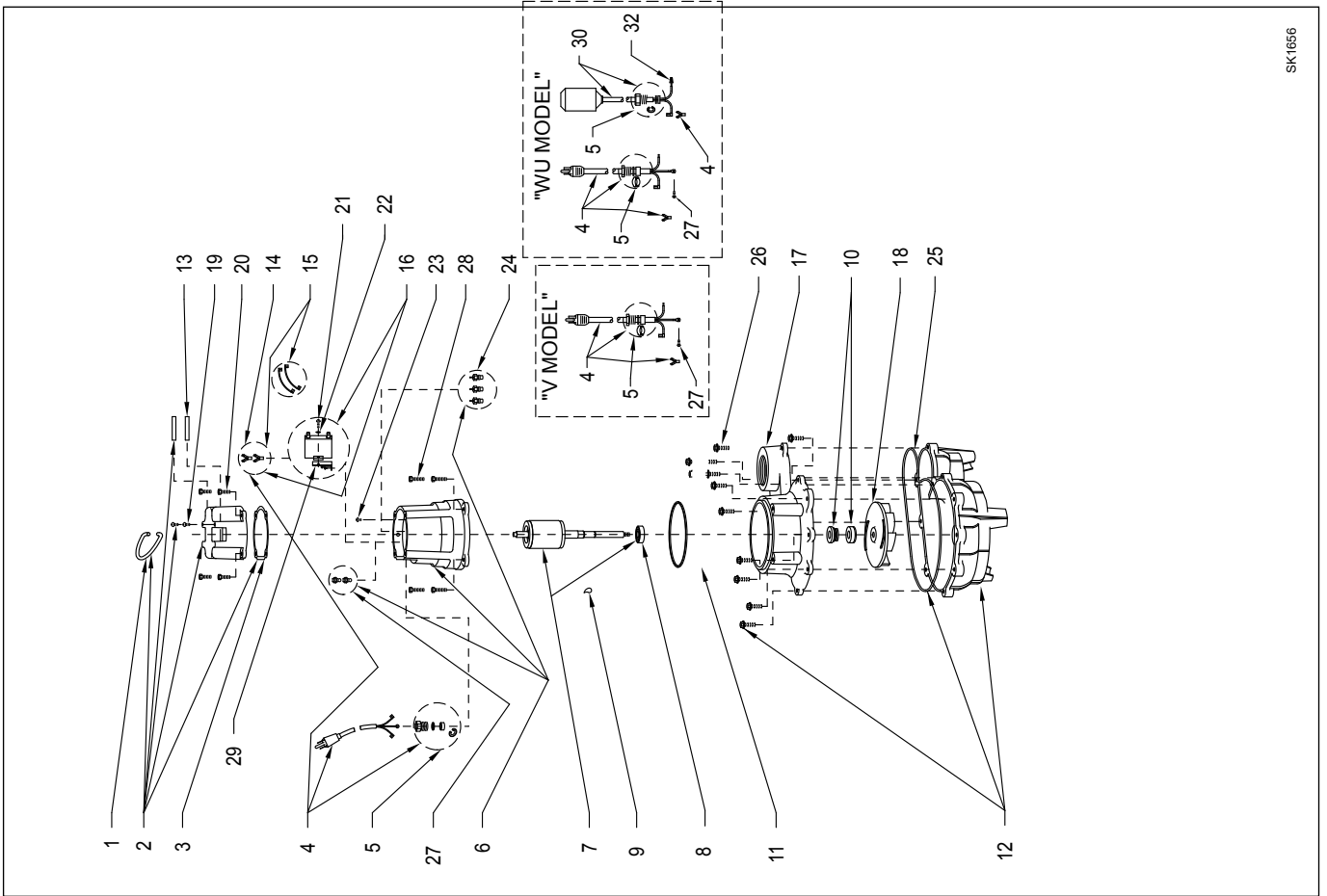
⊠ Items included in Rebuild Kit.

⊠ Not shown in illustration.

**NOTES:**

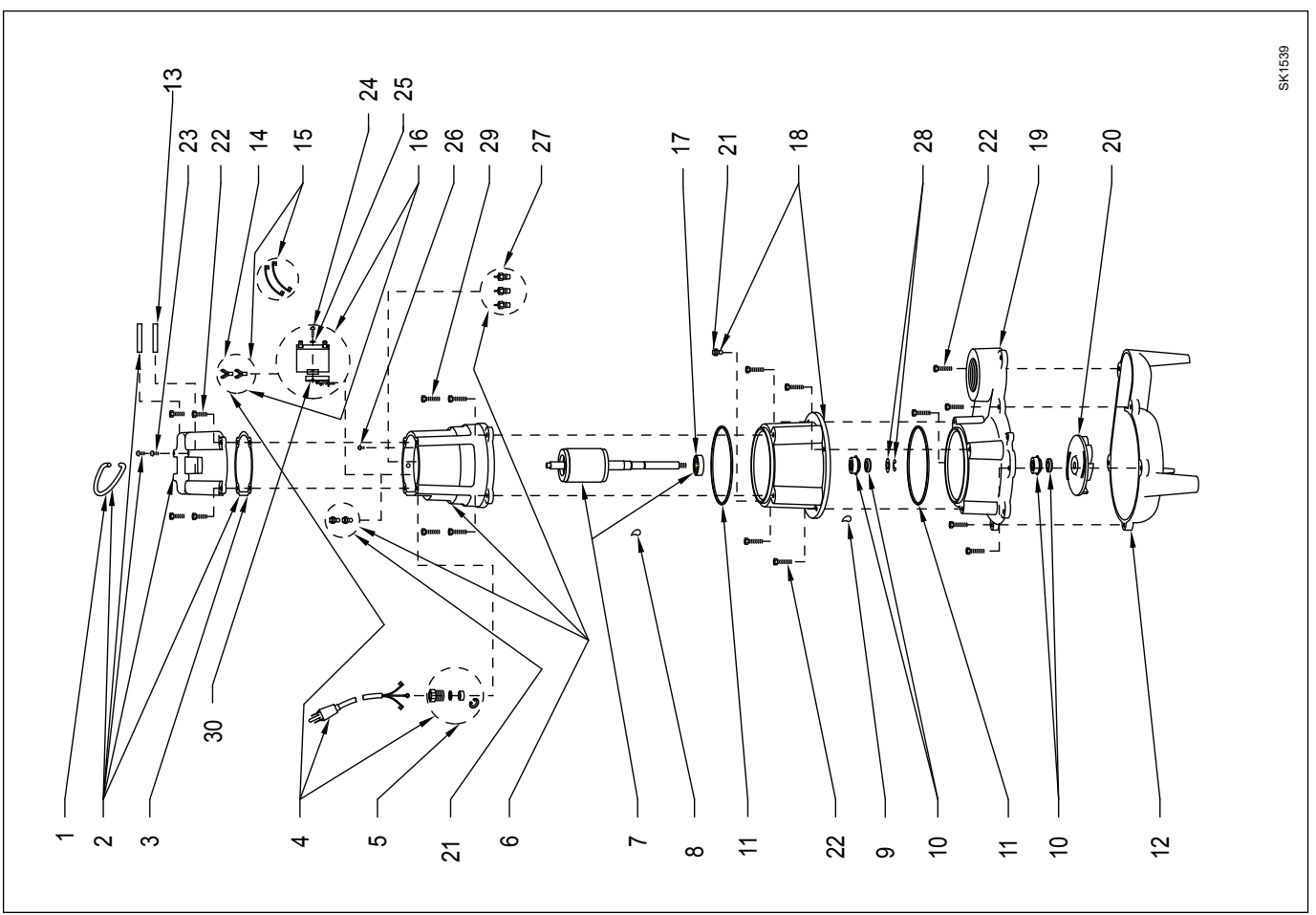
- 1) See FM0160 parts price sheet for listing of parts pricing.
- 2) "NA" indicates not applicable.
- 3) If an "X" follows model number or date of manufacture on brass I.D. tag, consult factory for ordering of this part.
- 4) The capacitor assembly on "REV.A" pumps only (Item 16), includes the case assembly (Item 2) which the customer must also replace.
- 5) When ordering motor housing (Item 6) or rotor and bearing (Item 7), specify either source or ZT motor. ZT stator can be identified by a completely round stator.

REPLACEMENT PARTS ILLUSTRATION FOR MODELS "N270" AND "E270"



SK1656

REPLACEMENT PARTS ILLUSTRATION FOR MODELS "N4270" AND "E4270"



SK1539